

RIGID BUS-BAR FITTING

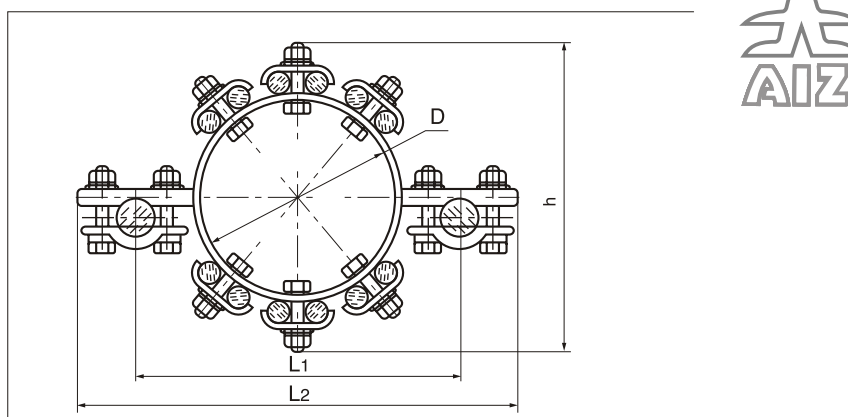
Rigid bus-bar fittings of substations included in this catalogue are intended for exploitation in substations on the basis of rigid bus-bar and on traditional substations.

Bus-bar fittings were developed by AIZ construction bureau jointly with the Energoprojekt institute for the purpose to introduce the progressive and hi-tech developments into power system. All fittings produced by AIZ group correspond to the specifications developed in accordance with the development strategy of united power system. Technical specifications were adjusted and registered.

Bus-bar fittings are also integrated into a complex type project of substations on the basis of rigid bus-bar.

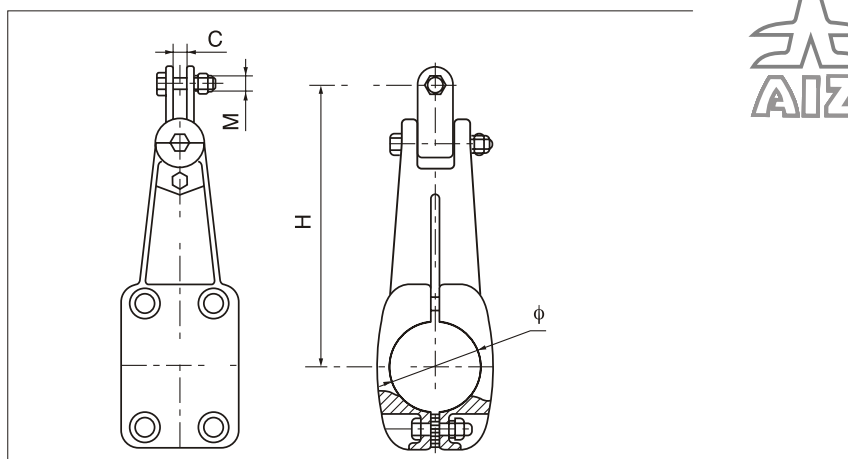
The rigid bus-bar fittings have designation AIZ. There is adopted a simple sequentially numbering of fittings in designation of armature. Armature with numbers up to 100 is used for the rigid bus-bar, inasmuch as is in contact with round buses of bus-bar. The fittings with numbers more than 100 are universal and intended to connect a branch of wires and can be used regardless of the rigid bus-bar in the repair or construction of substations, wherever is necessary to use new modern types of connective substation reinforcement. We invite all design organisations to cooperate. We are ready operatively develop new type of rigid bus-bar fitting, also we are ready to share our experience, assist in design, collectively resolve all issues related to the introduction of this advanced technology.

Internal phase substation ring supports for bundle bus-bar.
AIZ-2-2/8, AIZ-2-2/12, AIZ-2-2/16, AIZ-2-2/20, AIZ-2-2/24



Brand of armature	Wires according to GOST 839-80				Dimensions, mm				Weight.Kg
		A,AKP		AS, ASKS, ASKP, ASK					
	Nominal cross-section, mm ²				D	h	L1	L2	
AIZ-2-2/8	8	120, 150, 185	2	185/24; 185/29; 205/27; 240/32; 240/39	120	220	210	290	2,3
AIZ-2-2/12	12		2		160	260	250	330	2,8
AIZ-2-2/16	16		2	300/39; 300/48;	200	300	290	370	3,6
AIZ-2-2/20	20		2	330/30; 330/43; 400/51; 400/64; 450/56; 500/27	240	340	330	410	4,1
AIZ-2-2/24	24		2		280	380	370	450	4,7

Suspension supports for tubular bus-bar.
AIZ-3-70 - AIZ-3-250



Brand of armature	Diameter of aluminium bus-bar, mm	Dimensions, mm				Weight. Kg
		C	M	H	φ	
AIZ-3-70	70	18	M16	290	70	3,0
AIZ-3-80	80	18	M16	300	80	6,0
AIZ-3-90	90	18	M16	310	90	6,5
AIZ-3-100	100	20	M16	340	100	7,5
AIZ-3-120	120	20	M18	380	120	10,5
AIZ-3-130	130	20	M18	400	130	13,5
AIZ-3-150	150	20	M20	410	150	16,5
AIZ-3-170	170	22	M20	440	170	20,0
AIZ-3-200	200	24	M22	450	200	22,5
AIZ-3-250	250	26	M24	470	250	24,8

AIZ®-2-2/8...24

CONVENTIONAL MARKING

AIZ - trade mark of bus-bar
 2 - mark of spacer
 2 - quantity of carrying aluminum wires
 8-24 - quantity of aluminum wires

TR 3449-108-53937652-08 "Substation fitting for 6-500 kV"

NOMENCLATURE

AIZ-2-2/8
 AIZ-2-2/12
 AIZ-2-2/16
 AIZ-2-2/20
 AIZ-2-2/24

APPLICATION AREA

Internal phase substation spacers were designed to hold aluminium wires in a circle in an amount from 8 to 24 depending on the transfer of necessary power. The figure shows the conditional spacer for 12 wires and 2 carrying wires.

AIZ®-3-70...250

CONVENTIONAL MARKING

AIZ - trade mark of bus-bar
 3 - mark of suspension support
 70-250 - conditional dimension of aluminium tube
 TR 3449-108-53937652-08 „Substation fitting for 6- 500 kV"

NOMENCLATURE

AIZ-3-70
 AIZ-3-80
 AIZ-3-90
 AIZ-3-100
 AIZ-3-120
 AIZ-3-130
 AIZ-3-150
 AIZ-3-170
 AIZ-3-200
 AIZ-3-250

APPLICATION AREA

Suspension support is designed for the suspension of the aluminum tubular busbar in locations, where it is impossible to install SHOP supports. Support is manufactured (with or for) polymeric or glass insulators, taking into account the degree of pollution of the atmosphere. Dimensions of connecting link of clip correspond to the dimensions for the fittings of insulator or for the following socket tongues: U1-7-16, U1-12-16, U1-16-20, U1-21-24.

AIZ[®]-4-130...250

CONVENTIONAL MARKING

AIZ - trade mark of bus-bar
4 - suspension support numbering
130-250 - conditional diameter of bus-bar mm

TR 3449-108-53937652-08 "Substation fitting for 6-500 kV"

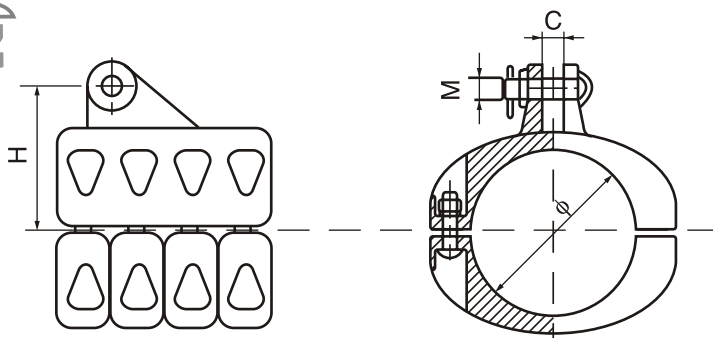
NOMENCLATURE

AIZ-4-130
AIZ-4-150
AIZ-4-170
AIZ-4-200
AIZ-4-250

APPLICATION AREA

Suspension support is designed for the suspension of the of aluminium tubular bus-bar in locations, where it impossible to install AIZ (P) supports. Clamps AIZ-4 were made for the exploitation of armature with a great diameters to hang it on V form garlands for a fixing bus-bar along an axis. Support is manufactured (with or for) polymeric or glass insulators, taking into account the degree of pollution of the atmosphere.

Suspension supports for tubular bus-bar. AIZ-4-130.. AIZ-4-250



Brand of armature	Diameter of aluminium bus-bar, mm	Dimensions, mm				Weight, kg
		C	M	H	φ	
AIZ-4-130	130/116	26	18	155	130	12,0
AIZ-4-150	150/136	26	18	165	150	16,5
AIZ-4-170	170/156	26	20	172	170	18,0
AIZ-4-200	200/180	30	24	185	200	22,0
AIZ-4-250	250/230	30	24	216	250	29

AIZ[®]-5-130...250

CONVENTIONAL MARKING

AIZ - trade mark of bus-bar
5 - mark of suspension support
130-250 - conditional dimension of aluminium tube

TR 3449-108-53937652-08 "Substation fitting for 6-500 kV"

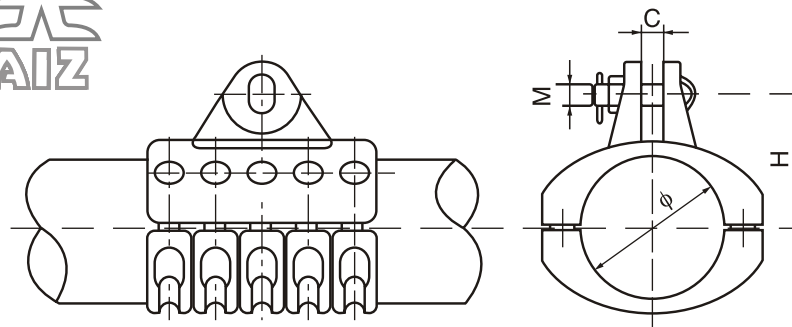
NOMENCLATURE

AIZ-5-130
AIZ-5-150
AIZ-5-170
AIZ-5-200
AIZ-5-250

APPLICATION AREA

Suspension support is designed for the suspension of the aluminium tubular bus-bar in locations, where it impossible to install AIZ (P) supports. Clamps AIZ-4 were made for the exploitation of aluminium tubes with a great diameters for the current over loads in condition K3. Support is manufactured (with or for) polymeric or glass insulators, taking into account the degree of pollution of the atmosphere.

Suspension supports for tubular bus-bar. AIZ-5-130 - AIZ-5-250



Brand of armature	Diameter of aluminium bus-bar, mm	Dimensions, mm				Weight, kg
		C	M	H	φ	
AIZ-5-130	130/116	27	18	155	130	12,0
AIZ-5-150	150/136	29	18	165	150	16,0
AIZ-5-170	170/156	26	20	172	170	18,0
AIZ-5-200	200/180	30	24	185	200	22,0
AIZ-5-250	250/230	30	24	230	250	29,0

T-connector for tubular bus-bar, for the junction of circular bus with a rigid bus-bar AIZ-6-50... AIZ-6-250

AIZ®-6-50..250

CONVENTIONAL MARKING

AIZ - trade mark of bus-bar
6 - junction clamp with parallel paw
50-250 -conditional diameter of of aluminium bus, mm

TR 3449-108-53937652-08 "Substation fitting for 6-500 kV"

NOMENCLATURE

AIZ-6-50	AIZ-6-150
AIZ-6-70	AIZ-6-170
AIZ-6-80	AIZ-6-200
AIZ-6-90	AIZ-6-250
AIZ-6-100	
AIZ-6-110	
AIZ-6-120	
AIZ-6-130	

APPLICATION AREA

Junction clamp is produced for a rigid bus-bar junction, which is made in the form of of aluminium tube. Paw of the clamp is parallel orientated to the axis of of aluminium tube. The necessary apertures for installation of hardware clamps can be pierced with a special instrument in the conditions of substation, also the factory can deliver it by the special order. Possible delivery of the clamp AIZ-6 with a paw, which is produced from coated copper.

T-connector for tubular bus-bar, for the junction of circular bus with a rigid bus-bar AIZ-7-70... AIZ-7-250

AIZ®-7-70...250

CONVENTIONAL MARKING

AIZ - trade mark of bus-bar
7 - junction clamp with perpendicular paw
70-250 - conditional dimension of of aluminium bus, mm

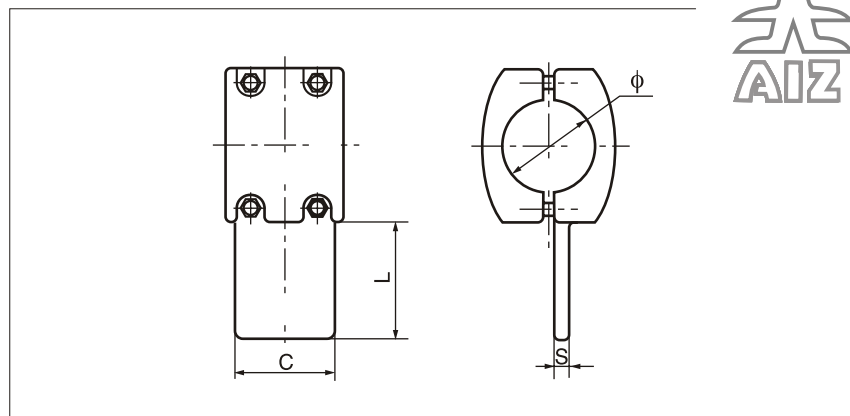
TR 3449-108-53937652-08 "Substation fitting for 6-500 kV"

NOMENCLATURE

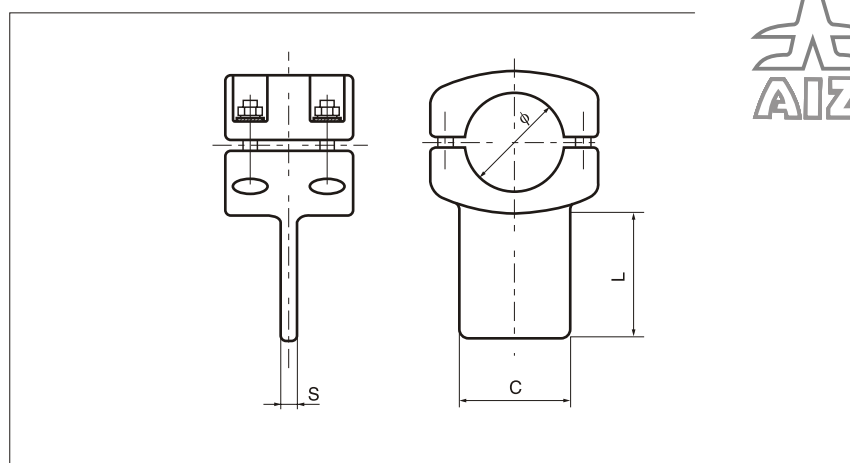
AIZ-7-70	AIZ-7-150
AIZ-7-80	AIZ-7-170
AIZ-7-90	AIZ-7-200
AIZ-7-100	AIZ-7-250
AIZ-7-110	
AIZ-7-120	
AIZ-7-130	

APPLICATION AREA

Junction clamp is produced for a rigid bus-bar junction, which is made in the form of of aluminium tube. Paw of the clamp is perpendicular orientated to the axis of of aluminium tube. Also the clamp is exploited for gathering terminals of the rigid bus-bar by connecting to the vibration extinguishing circles of terminals. The necessary apertures for installation of hardware clamps can be pierced with a special instrument in the conditions of substation, also the factory can deliver it by the special order. Possible delivery of the clamp AIZ-6 with a paw, which is produced from coated copper.



Brand of armature	Diameter of aluminium bus-bar, mm	Dimensions, mm				Weight, kg
		S	L	C	φ	
AIZ-6-50	50	14	85	80	50	2,0
AIZ-6-70	70	16	85	80	70	2,4
AIZ-6-80	80	16	85	80	80	4,0
AIZ-6-90	90	18	105	100	90	4,2
AIZ-6-100	100	18	105	100	100	4,4
AIZ-6-110	110	18	105	100	110	5,0
AIZ-6-120	120	18	105	100	120	5,2
AIZ-6-130	130	20	130	125	130	7,2
AIZ-6-150	150	20	130	125	150	8,2
AIZ-6-170	170	22	160	150	170	11,5
AIZ-6-200	200	22	170	160	200	15,0
AIZ-6-250	250	24	180	170	250	19,5



Brand of armature	Diameter of aluminium bus-bar, mm	Dimensions, mm				Weight, kg
		S	L	C	φ	
AIZ-7-70	70	16	100	80	70	3,0
AIZ-7-80	80	16	100	80	80	6,0
AIZ-7-90	90	18	125	100	90	6,5
AIZ-7-100	100	18	125	100	100	7,5
AIZ-7-110	110	18	125	100	110	
AIZ-7-120	120	18	125	100	120	10,5
AIZ-7-130	130	20	150	125	130	13,5
AIZ-7-150	150	20	150	125	150	16,5
AIZ-7-170	170	22	180	150	170	20,0
AIZ-7-200	200	22	200	160	200	22,5
AIZ-7-250	250	24	200	170	250	24,8

AIZ® -8-50...250

CONVENTIONAL MARKING

AIZ - trade mark of bus-bar
8 - clamp numbering
50-250 - conditional diameter of bus, mm

TR 3449-108-53937652-08 "Substation fitting for 6-500 kV"

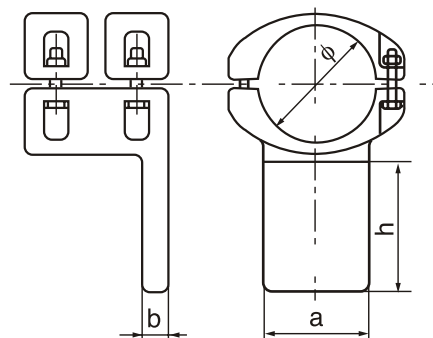
NOMENCLATURE

AIZ-8-50	AIZ-8-150
AIZ-8-60	AIZ-8-170
AIZ-8-70	AIZ-8-180
AIZ-8-80	AIZ-8-200
AIZ-8-90	AIZ-8-250
AIZ-8-100	
AIZ-8-110	
AIZ-8-120	
AIZ-8-130	

APPLICATION AREA

Junction clamp is used to connect the bus of rigid bus-bar, bus is made in the form of of aluminium tube. Paw of the clamp is perpendicular orientated to the axis of of aluminium tube. The necessary apertures for installation of hardware clamps can be pierced with a special instrument in the conditions of substation, also the factory can deliver it by the special order. Possible delivery of the clamp AIZ-8 with a paw, which is produced from coated copper.

T- connectors for the tubular bus-bar AIZ-8-50.. AIZ-8-250



Brand of armature	Diameter of aluminium bus-bar, mm	Dimensions, mm				Weight. kg
		b	h	a	φ	
AIZ-8-50	50/44	16	85	50	50	2.0
AIZ-8-60	60/54	16	100	80	60	2.3
AIZ-8-70	70/64	16	100	80	70	2.5
AIZ-8-80	80/72	16	100	80	80	2.7
AIZ-8-90	90/80	18	125	100	90	3.3
AIZ-8-100	100/90	18	125	100	100	3.8
AIZ-8-110	110/100	18	125	100	110	5.2
AIZ-8-120	120/110	28	125	100	120	5.4
AIZ-8-130	130/116	20	150	125	130	6.7
AIZ-8-150	150/136	20	150	125	150	8.0
AIZ-8-170	170/156	22	180	150	170	10.5
AIZ-8-200	200/180	22	200	150	200	16.0
AIZ-8-250	250/230	24	200	150	250	22.0

AIZ® -9-70...250

CONVENTIONAL MARKING

AIZ - trade mark of bus- bar
9 - junction clamp numbering
70-250 - conditional diameter of bus, mm

TR 3449-108-53937652-08 "Substation fitting for 6-500 kV"

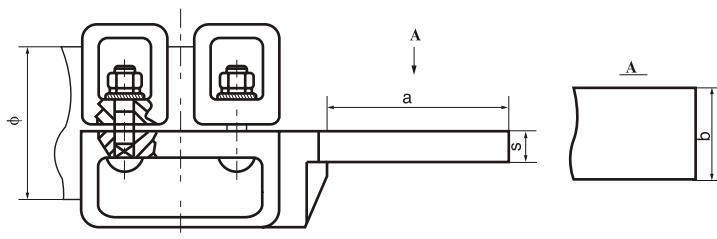
NOMENCLATURE

AIZ-9-70	AIZ-9-150
AIZ-9-80	AIZ-9-170
AIZ-9-90	AIZ-9-200
AIZ-9-100	AIZ-9-250
AIZ-9-110	
AIZ-9-120	
AIZ-9-130	

APPLICATION AREA

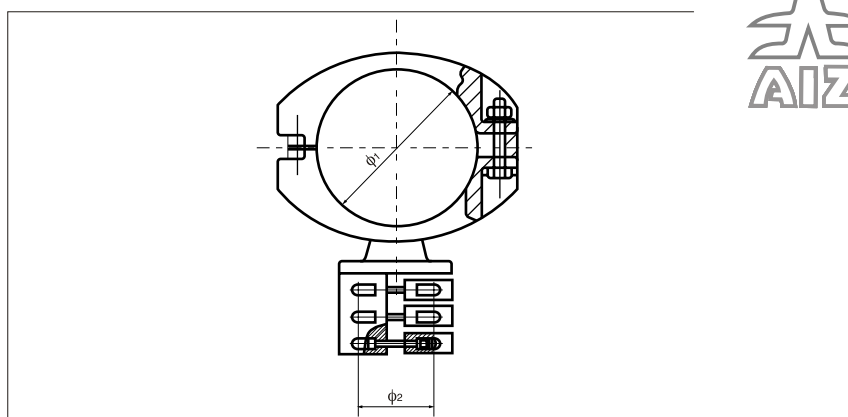
The clamp was designed for joining the of aluminium tubular bus-bar to the current carrying outlets. The length of the bus should be admissible; otherwise it would be necessary to provide a thermal compensation of flexible coupling opposite the clamp.

Terminal connectors for horizontal tubular bus-bar AIZ-9-70 - AIZ-9-250



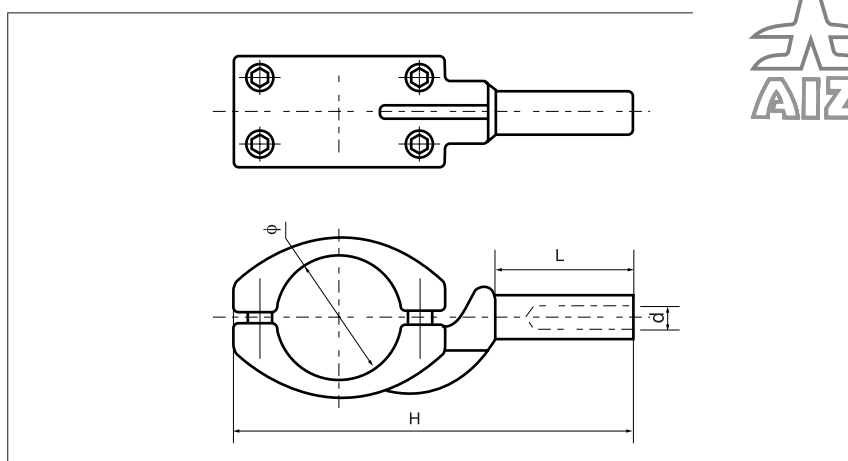
Brand of armature	Diameter of aluminium bus-bar, mm	Dimensions, mm				Weight. kg
		S	a	b	φ	
AIZ-9-70	70/64	16	85	80	70	2,8
AIZ-9-80	80/72	16	85	80	80	4,0
AIZ-9-90	90/80	18	105	100	90	4,2
AIZ-9-100	100/90	18	105	100	100	4,4
AIZ-9-110	110/100	18	105	100	110	4,8
AIZ-9-120	120/110	18	105	100	120	5,2
AIZ-9-130	130/116	20	130	125	130	7,2
AIZ-9-150	150/136	20	130	125	150	8,2
AIZ-9-170	170/156	22	160	150	170	9,5
AIZ-9-200	200/180	22	170	160	200	15,0
AIZ-9-250	250/230	24	180	170	250	20,0

T- connector for the tubular bus-bar with the bolt junction.
AIZ-10-70... AIZ-10-250



Brand of armature	Diameter of aluminium bus-bar, mm	Dimensions, mm			Weight, kg
		ϕ_2	ϕ_1	wires	
AIZ-10-70	70/64	Specified in order document, according to wires diameter	70	Type and diameter of a wire should be indicated at the order of clamp	2,4
AIZ-10-80	80/72		80		4,0
AIZ-10-90	90/80		90		4,2
AIZ-10-100	100/90		100		4,4
AIZ-10-110	110/100		110		5,0
AIZ-10-120	120/110		120		5,2
AIZ-10-130	130/116		130		7,2
AIZ-10-150	150/136		150		8,2
AIZ-10-170	170/156		170		11,5
AIZ-10-200	200/180		200		15,0
AIZ-10-250	250/230		250		19,5

T- connector for the tubular bus-bar with the pressed wire.
AIZ-11-70... AIZ-11-250



Brand of armature	Diameter of aluminium bus-bar, mm	Dimensions, mm				Weight, kg
		H	L	d	ϕ	
AIZ-11-70	70/64	450	170	The connecting size corresponds to an ordered wire	70	3,0
AIZ-11-80	80/72	450	170		80	6,0
AIZ-11-90	90/80	500	200		90	6,5
AIZ-11-100	100/90	500	200		100	7,5
AIZ-11-110	110/100	500	200		110	
AIZ-11-120	120/110	520	200		120	10,5
AIZ-11-130	130/116	520	200		130	13,5
AIZ-11-150	150/136	560	200		150	16,5
AIZ-11-170	170/156	560	200		170	20,0
AIZ-11-200	200/180	600	200		200	22,5
AIZ-11-250	250/230	600	200		250	24,8

AIZ®-10-70..250

CONVENTIONAL MARKING

AIZ - trade mark of bus-bar
 10 - clamp with the bolt junction
 70-250 - conditional diameter of the of aluminium bus, mm

TR 3449-108-53937652-08 "Substation fitting for 6-500 kV"

NOMENCLATURE

AIZ-10-70 AIZ-10-150
 AIZ-10-80 AIZ-10-170
 AIZ-10-90 AIZ-10-200
 AIZ-10-100 AIZ-10-250
 AIZ-10-110
 AIZ-10-120
 AIZ-10-130

APPLICATION AREA

Junction clamp is used to connect the bus of rigid bus-bar, bus is made in the form of of aluminium tube. The connection of the outlet wire to the clamp executes by bolt junction. We would be pleased to get an indicated type and diameter of the outlet wire before the ordering.
 For instance:
 The AIZ-10-120 clamp for the AC300/25 wire.

AIZ®-11-70...250

CONVENTIONAL MARKING

AIZ - trade mark of bus-bar
 11 - junction clamp for pressing
 70-250 - conditional diameter of bus, mm

TR 3449-108-53937652-08 "Substation fitting for 6-500 kV"

NOMENCLATURE

AIZ-11-70 AIZ-11-150
 AIZ-11-80 AIZ-11-170
 AIZ-11-90 AIZ-11-200
 AIZ-11-100 AIZ-11-250
 AIZ-11-110
 AIZ-11-120
 AIZ-11-130

APPLICATION AREA

Junction clamp is used to connect the bus of rigid bus-bar, bus is made in the form of of aluminium tube. We would be pleased to get an indicated type and diameter of the outlet wire before the ordering.

For instance:
 The AIZ-11-120 clamp for the AC300/25 wire.

AIZ[®]-12-70...250

CONVENTIONAL MARKING

AIZ - trade mark of bus-bar
12 - clamp for two wires
70-250 - conditional diameter of the bus, mm
200 or 400- distance between branch of wires

TR 3449-108-53937652-08 "Substation fitting for 6-500 kV"

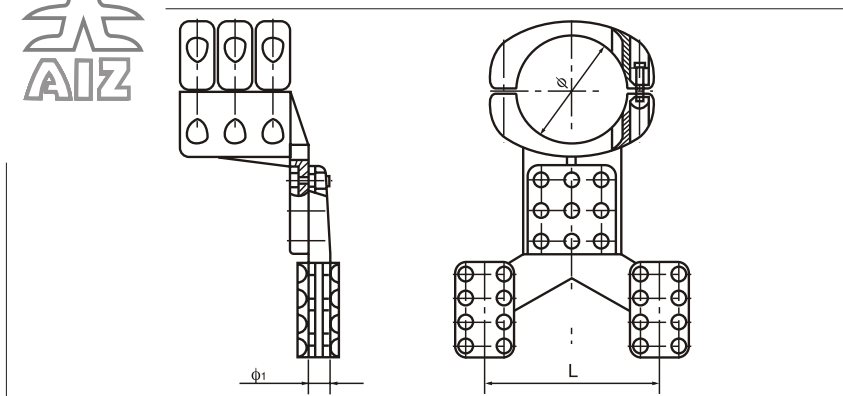
NOMENCLATURE

AIZ-12-70/200	AIZ-12-70/400
AIZ-12-80/200	AIZ-12-80/400
AIZ-12-90/200	AIZ-12-90/400
AIZ-12-100/200	AIZ-12-100/400
AIZ-12-110/200	AIZ-12-110/400
AIZ-12-120/200	AIZ-12-120/400
AIZ-12-130/200	AIZ-12-130/400
AIZ-12-150/200	AIZ-12-150/400
AIZ-12-170/200	AIZ-12-170/400
AIZ-12-180/200	AIZ-12-180/400
AIZ-12-200/200	AIZ-12-200/400
AIZ-12-250/200	AIZ-12-250/400

APPLICATION AREA

Junction clamp is used to connect the bus of rigid bus-bar, bus is made in the form of aluminium tube of two of aluminium wires. The connection of the outlet wires to the clamp executes by bolt junction. Clamp is designed for branch of wires with intraphase distance 200 mm or 400 mm.

T-Connectors for double conductors. AIZ-12-70 - AIZ-12-250



Brand of armature	Diameter of aluminium bus-bar, mm	Wires, mm	Dimensions, mm		
			ϕ	ϕ_1	L
AIZ-12-70/200(400)	70/64	Possible to manufacture for all diameters of wire according to clients order	70	Submit the type and diameter of wire before calmaps AIZ-10 ordering	200 (400)
AIZ-12-80/200(400)	80/72		80		200(400)
AIZ-12-90/200(400)	90/80		90		200(400)
AIZ-12-100/200(400)	100/90		100		200(400)
AIZ-12-110/200(400)	110/100		110		200(400)
AIZ-12-120/200(400)	120/110		120		200(400)
AIZ-12-130/200(400)	130/116		130		200(400)
AIZ-12-150/200(400)	150/136		150		200(400)
AIZ-12-170/200(400)	170/156		170		200(400)
AIZ-12-200/200(400)	200/180		200		200(400)
AIZ-12-250/200(400)	250/230		250		200(400)

AIZ[®]-13-70...250

CONVENTIONAL MARKING

AIZ - trade mark of bus-bar
13 - clamp for two wires
70-250 - conditional diameter of the bus, mm
200 or 400- distance between branch of wires

TR 3449-108-53937652-08 "Substation fitting for 6-500 kV"

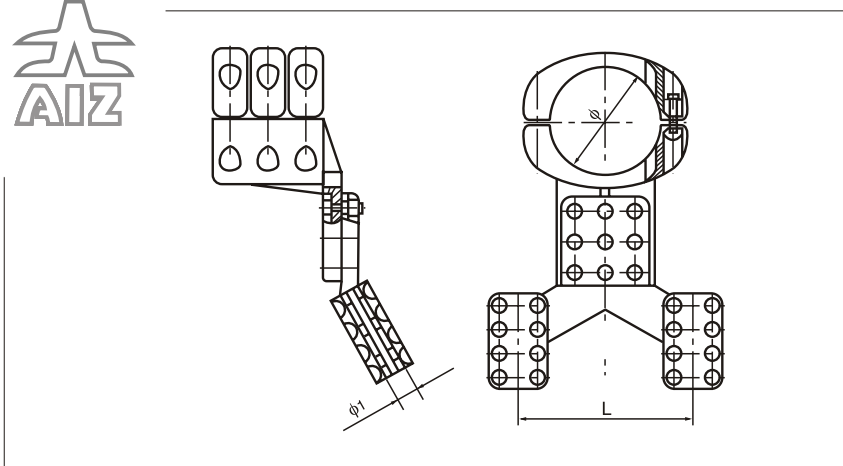
NOMENCLATURE

AIZ-13-70/200	AIZ-13-70/400
AIZ-13-80/200	AIZ-13-80/400
AIZ-13-90/200	AIZ-13-90/400
AIZ-13-100/200	AIZ-13-100/400
AIZ-13-110/200	AIZ-13-110/400
AIZ-13-120/200	AIZ-13-120/400
AIZ-13-130/200	AIZ-13-130/400
AIZ-13-150/200	AIZ-13-150/400
AIZ-13-170/200	AIZ-13-170/400
AIZ-13-180/200	AIZ-13-180/400
AIZ-13-200/200	AIZ-13-200/400
AIZ-13-250/200	AIZ-13-250/400

APPLICATION AREA

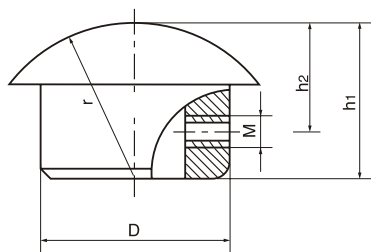
Junction clamp is used to connect the bus of rigid bus-bar, bus is made in the form of aluminium tube of two of aluminium wires. The connection of the outlet wires to the clamp executes by bolt junction. Clamp is designed for branch of wires with intraphase distance 200 mm or 400 mm.

T-Connectors for double conductors AIZ-13-70.. AIZ-13-250



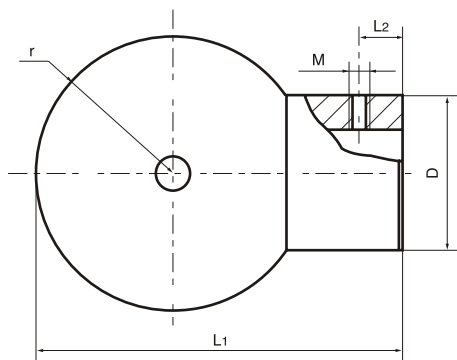
Brand of armature	Diameter of aluminium bus-bar, mm	Wires, mm	Dimensions, mm		
			ϕ	ϕ_1	L
AIZ-13-70/200(400)	70/64	Possible to manufacture for all diameters of wire according to clients order	70	Corresponds to diameter of installed wires	200 (400)
AIZ-13-80/200(400)	80/72		80		200(400)
AIZ-13-90/200(400)	90/80		90		200(400)
AIZ-13-100/200(400)	100/90		100		200(400)
AIZ-13-110/200(400)	110/100		110		200(400)
AIZ-13-120/200(400)	120/110		120		200(400)
AIZ-13-130/200(400)	130/116		130		200(400)
AIZ-13-150/200(400)	150/136		150		200(400)
AIZ-13-170/200(400)	170/156		170		200(400)
AIZ-13-200/200(400)	200/180		200		200(400)
AIZ-13-250/200(400)	250/230		250		200(400)

End-caps for tubular bus-bar.
AIZ-14-70... AIZ-14-250



Brand of armature	Diameter of aluminium bus-bar, mm	Dimensions, mm					Weight, kg
		D	M	r	h1	h2	
AIZ-14-70	70/64	64	M8	70	42	30	0.2
AIZ-14-80	80/72	72	M8	70	50	35	0.3
AIZ-14-90	90/80	80	M8	80	55	35	0.4
AIZ-14-100	100/90	90	M8	90	60	40	0.5
AIZ-14-110	110/100	99	M10	100	60	30	0.6
AIZ-14-120	120/110	110	M10	120	65	40	0.6
AIZ-14-130	130/116	116	M10	120	65	40	0.7
AIZ-14-150	150/136	136	M10	150	70	40	1.0
AIZ-14-170	170/156	156	M10	160	80	50	1.2
AIZ-14-200	200/180	180	M12	170	85	55	2.3
AIZ-14-250	250/230	230	M12	180	85	60	2.7

End-balls for tubular bus-bar.
AIZ-15-70... AIZ-15-250



Brand of armature	Diameter of aluminium bus-bar, mm	Dimensions, mm					Weight, kg
		D	M	r	L1	L2	
AIZ-15-70	70/64	64	M8	70	165	20	1.2
AIZ-15-80	80/72	72	M8	70	165	20	1.2
AIZ-15-90	90/80	80	M8	80	184	20	1.5
AIZ-15-100	100/90	90	M8	80	195	25	2.0
AIZ-15-110	110/100	99	M10	90	215	25	2.5
AIZ-15-120	120/110	110	M10	90	220	25	3.5
AIZ-15-130	130/116	116	M10	90	220	25	4.0
AIZ-15-150	150/136	136	M10	150	340	25	5.0
AIZ-15-170	170/156	156	M10	170	380	30	10
AIZ-15-200	200/180	180	M12	180	415	40	24
AIZ-15-250	250/230	230	M12	230	515	40	35

AIZ® -14-70..250

CONVENTIONAL MARKING

AIZ - trade mark of bus-bar
14 - end-cap of tubular bus-bar
70-250 - conditional diameter of bus, mm

TR 3449-108-53937652-08 "Substation fitting for 6-500 kV"

NOMENCLATURE

AIZ-14-70	AIZ-14-150
AIZ-14-80	AIZ-14-170
AIZ-14-90	AIZ-14-200
AIZ-14-100	AIZ-14-250
AIZ-14-110	
AIZ-14-120	
AIZ-14-130	

APPLICATION AREA

Cap is used for the end capping of aluminium tube of rigid bus-bar. It is suitable for low and medium voltage.

AIZ® -15-70...250

CONVENTIONAL MARKING

AIZ - trade mark of bus-bar
15 - end-ball
70-250 - conditional diameter of aluminium bus, mm

TR 3449-108-53937652-08 "Substation fitting for 6-500 kV"

NOMENCLATURE

AIZ-15-70	AIZ-15-150
AIZ-15-80	AIZ-15-170
AIZ-15-90	AIZ-15-200
AIZ-15-100	AIZ-15-250
AIZ-15-110	
AIZ-15-120	
AIZ-15-130	

APPLICATION AREA

End ball is used to mount the end of aluminium tube of rigid bus-bar. It is suitable for high voltage. Performs the function of the plug and alignment of electric field potential.

AIZ®-registered trade mark of the group of companies AIZ

AIZ, RUSSIA +7-495-7412286
AIZ, BELARUS +375-222455264
AIZ, KAZAKHSTAN +7-717-296-5353
AIZ, LITHUANIA +370-62749925

www.bus-bar.ru
www.aiz.by
www.aiz.kz
www.bus-bar.eu

mail@bus-bar.ru
mail@aiz.by
mail@aiz.kz
mail@bus-bar.eu



AIZ® -16-70...250

CONVENTIONAL MARKING

AIZ - trade mark of bus-bar
16 - end cap with damping conductor
70-250 - conditional diameter of bus, mm

TR 3449-108-53937652-08 "Substation fitting for 6-500 kV"

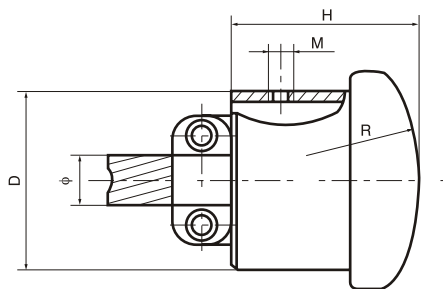
NOMENCLATURE

AIZ-16-70
AIZ-16-80
AIZ-16-90
AIZ-16-100
AIZ-16-110
AIZ-16-120
AIZ-16-130
AIZ-16-150
AIZ-16-170
AIZ-16-200
AIZ-16-250

APPLICATION AREA

Cap is used for the end capping of of aluminium tube of rigid bus-bar. The plug has a clamp for fastening the damping wire. It is suitable for low and medium voltage.

End-caps for tubular bus-bar with damping conductor. AIZ-16-70... AIZ-16-250



Brand of armature	Diameter of aluminium bus-bar, mm	Dimensions, mm						Weight. kg
		D	M	R	H	φ	Wire	
AIZ-16-70	70/64	64	M8	70	42	22	AC-240	0.7
AIZ-16-80	80/72	72	M8	70	50	22	AC-240	0.7
AIZ-16-90	90/80	80	M8	80	60	25	AC-300	0.8
AIZ-16-100	100/90	90	M8	90	60	25	AC-300	1.1
AIZ-16-110	110/100	100	M10	100	60	31	AC-500	1.2
AIZ-16-120	120/110	110	M10	120	65	31	AC-500	1.2
AIZ-16-130	130/116	116	M10	120	65	31	AC-500	1.3
AIZ-16-150	150/136	136	M10	150	70	35	AC-600	1.6
AIZ-16-170	170/156	156	M10	160	80	35	AC-600	2.1
AIZ-16-200	200/180	179	M12	170	85	35	AC-600	2.7
AIZ-16-250	250/230	229	M12	180	85	35	AC-600	3.3

AIZ® -17-70...250

CONVENTIONAL MARKING

AIZ - trade mark of bus -bar
17 - end ball plug
70-250 - conditional diameter of bus, mm

TR 3449-108-53937652-08 "Substation fitting for 6-500 kV"

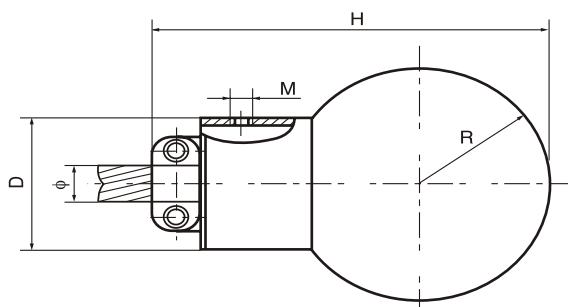
NOMENCLATURE

AIZ-17-70
AIZ-17-80
AIZ-17-90
AIZ-17-100
AIZ-17-110
AIZ-17-120
AIZ-17-130
AIZ-17-150
AIZ-17-170
AIZ-17-180
AIZ-17-200
AIZ-17-250

APPLICATION AREA

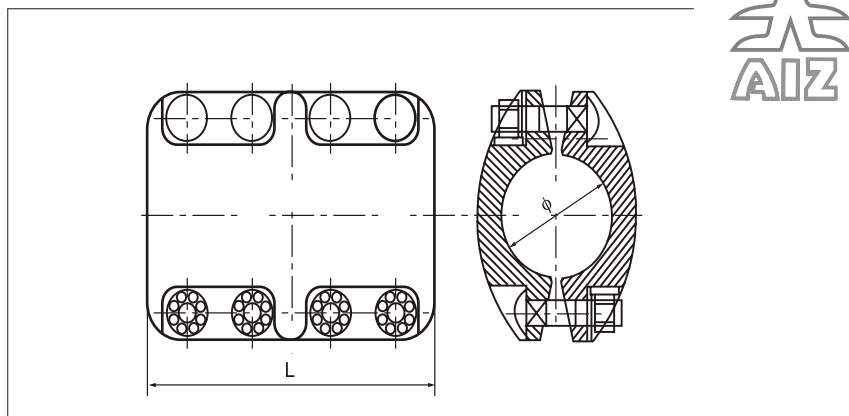
End ball is used to mount the end of of aluminium tube of rigid bus-bar. The plug has a clamp for fastening the damping wire. It is suitable for high voltage. The ball allows to evenly subdivide electric field.

End-balls for tubular bus-bar with damping conductor. AIZ -17-70- AIZ -17-250



Brand of armature	Diameter of aluminium bus-bar, mm	Dimensions, mm						Weight. kg
		D	M	R	H	φ	Wire	
AIZ-17-70	70/64	64	M8	70	165	22	AC-240	1.5
AIZ-17-80	80/72	72	M8	70	165	22	AC-240	1.5
AIZ-17-90	90/80	80	M8	86	165	25	AC-300	1.7
AIZ-17-100	100/90	90	M8	90	195	25	AC-300	2.2
AIZ-17-110	110/100	100	M10	90	215	31	AC-500	3.2
AIZ-17-120	120/110	110	M10	90	220	31	AC-500	3.8
AIZ-17-130	130/116	116	M10	90	220	31	AC-500	4.5
AIZ-17-150	150/136	136	M10	150	340	35	AC-600	5.5
AIZ-17-170	170/156	156	M10	170	380	35	AC-600	10.8
AIZ-17-200	200/180	180	M12	180	415	35	AC-600	25
AIZ-17-250	250/230	229	M12	230	515	35	AC-600	36

Tubular bus-bar joints (Outside).
AIZ-18-70... AIZ-18-150



AIZ®-18-70..150

CONVENTIONAL MARKING

AIZ - trade mark of bus -bar
18 - bus-bar outside joint
70-250 - conditional diameter of aluminium of bus, mm

TR 3449-108-53937652-08 "Substation fitting for 6-500 kV"

NOMENCLATURE

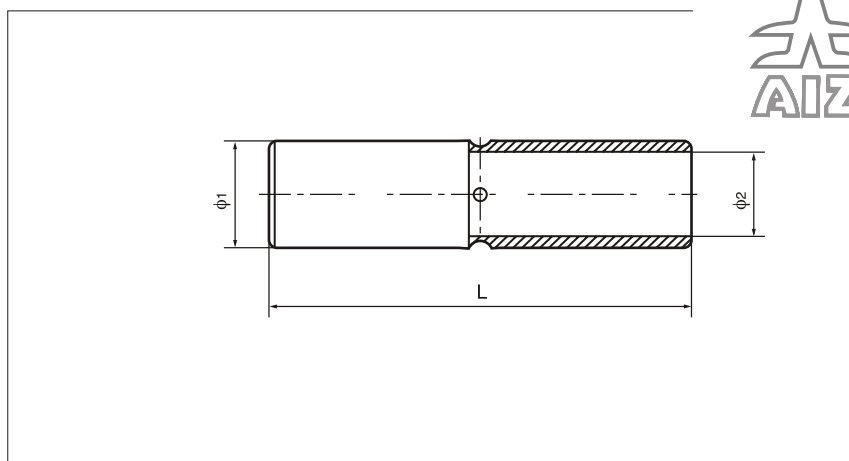
AIZ-18-70
AIZ-18-80
AIZ-18-90
AIZ-18-100
AIZ-18-110
AIZ-18-120
AIZ-18-130
AIZ-18-150

APPLICATION AREA

Connecting clamp is designed to connect two bus tubes of identical diameter of rigid bus-bar. Outside clamp junction. It is suitable for low and medium voltage.

Brand of armature	Diameter of aluminium bus-bar, mm	Dimensions, mm		Weight. kg
		ϕ	L	
AIZ-18-70	70/64	70	180	5,0
AIZ-18-90	90/80	90	210	8,7
AIZ-18-100	100/90	100	238	10,7
AIZ-18-110	110/100	110	250	10,7
AIZ-18-120	120/110	120	260	12,7
AIZ-18-130	130/116	130	280	14,0
AIZ-18-150	150/136	150	320	18,0

Tubular bus-bar joints (Inside).
AIZ-19-70... AIZ-19-170



AIZ®-19-70...170

CONVENTIONAL MARKING

AIZ - trade mark of bus-bar
19 - bus-bar inside joint
70-170 - conditional diameter of bus, mm

TR 3449-108-53937652-08 "Substation fitting for 6-500 kV"

NOMENCLATURE

AIZ-19-70
AIZ-19-80
AIZ-19-90
AIZ-19-100
AIZ-19-110
AIZ-19-120
AIZ-19-130
AIZ-19-150
AIZ-19-170

APPLICATION AREA

Connecting clamp is designed to connect two bus tubes of identical diameter of rigid bus-bar. For inside junction.

Brand of armature	Diameter of aluminium bus-bar, mm	Dimensions, mm			Weight. kg
		ϕ_1	ϕ_2	L	
AIZ-19-70	70/64	63	42	300	1,4
AIZ-19-80	80/72	71	52	300	1,6
AIZ-19-100	100/90	79	58	300	2,8
AIZ-19-110	110/100	99	71	380	4,1
AIZ-19-120	120/110	109	79	430	5,6
AIZ-19-130	130/116	114	80	480	6,3
AIZ-19-150	150/136	134	104	500	7,5
AIZ-19-170	170/156	154	108	500	11,0

AIZ® -20-90...150

CONVENTIONAL MARKING

AIZ - trade mark of rigid bus-bar fitting
20 - single flexible terminal junction clamp
90-150 - conditional diameter of bus, mm

TR 3449-108-53937652-08 "Substation fitting for 6-500 kV"

NOMENCLATURE

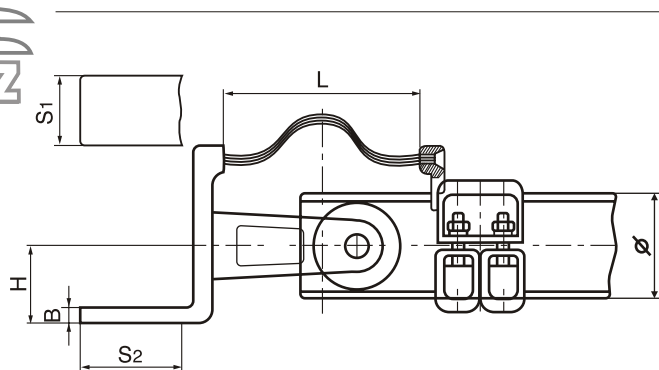
AIZ-20-90
AIZ-20-100
AIZ-20-110
AIZ-20-120
AIZ-20-130
AIZ-20-150

APPLICATION AREA

Junction clamp is used to connect the of aluminium tubular rigid bus-bar to conclusions of devices, which are horizontally orientated. The clamp has one flexible connection and mobile fastening of paw to bus. The necessary apertures for installation of hardware clamps can be pierced with special instrument, also the factory can perform this work and deliver it by clients special order. It is possible to deliver the clamp with paw, which is produced from coated copper.

Dimension H- should be mentioned in order

Support type single flexible terminal junction clamp for tubular bus-bar AIZ-20-90 - AIZ-20-150



Brand of armature	Diameter of aluminium bus-bar, mm	Dimensions, mm					Weight. kg
		L	S1	S2	B	Φ	
AIZ-20-90	90/80	340	80	105	16	90	7,5
AIZ-20-100	100/90	340	125	135	18	100	9,2
AIZ-20-110	110/100	360	125	130	20	110	11,0
AIZ-20-120	120/110	360	130	150	20	120	11,5
AIZ-20-130	130/116	360	150	150	20	130	13,0
AIZ-20-150	150/136	380	150	150	22	150	15,5

Dimension H- should be mentioned in order

AIZ® -21-80...150

CONVENTIONAL MARKING

AIZ - trade mark of bus-bar
21 - single flexible terminal junction clamp with inclined paw
80-150 -conditional diameter of bus, mm

TR 3449-108-53937652-08 "Substation fitting for 6-500 kV"

NOMENCLATURE

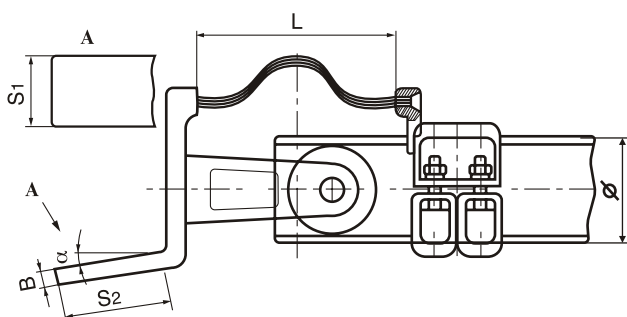
AIZ-21-80
AIZ-21-90
AIZ-21-100
AIZ-21-110
AIZ-21-120
AIZ-21-130
AIZ-21-150

APPLICATION AREA

The clamp was designed for joining the of aluminium tubular bus-bar to conclusions of devices, which are orientated under angle. The clamp has one flexible connection and mobile fastening of paw to bus. The necessary apertures for installation of hardware clamps can be pierced with special instrument, also the factory can perform this work and deliver it by clients special order. It is possible to deliver the clamp with paw, which is produced from coated copper.

Angle of slope should be mentioned in order.

Support type single flexible terminal junction clamp with inclined paw for tubular bus-bar AIZ -21-80- AIZ -21-150



Brand of armature	Diameter of aluminium bus-bar, mm	Dimensions, mm					Weight. kg
		L	S1	S2	B	Φ	
AIZ-21-80	80/74	250	80	105	18	80	7,5
AIZ-21-90	90/80	250	100	115	18	90	8,0
AIZ-21-100	100/90	340	126	126	22	100	13,5
AIZ-21-110	110/100	360	130	150	22	110	14,0
AIZ-21-120	120/110	360	130	150	22	120	15,0
AIZ-21-130	130/116	360	150	165	22	130	16,5
AIZ-21-150	150/136	360	150	165	22	150	17,5

Support type single flexible terminal junction clamp with inclined paw for tubular bus-bar AIZ-22-80 - AIZ-22-150

AIZ®-22-80..150

CONVENTIONAL MARKING

AIZ- trade mark of rigid bus-bar fitting
22-single flexible terminal junction clamp with inclined paw
80- 150 conditional diameter of bus, mm

TR 3449-108-53937652-08 "Substation fitting for 6-500 kV"

NOMENCLATURE

AIZ-22-80
AIZ-22-90
AIZ-22-100
AIZ-22-110
AIZ-22-120
AIZ-22-130
AIZ-22-150

APPLICATION AREA

The clamp was designed for joining the of aluminium tubular bus-bar to conclusions of devices, which are orientated under angle for 45 degrees. The clamp has one flexible connection and mobile fastening of paw to bus. The necessary apertures for installation of hardware clamps can be pierced with special instrument, also the factory can perform this work and deliver it by clients special order. It is possible to deliver the clamp with paw, which is produced from coated copper.

AIZ®-23-80...130

CONVENTIONAL MARKING

AIZ - trade mark of bus-bar
23 -single flexible terminal junction clamp
80-130 - conditional diameter of bus, mm

TR 3449-108-53937652-08 "Substation fitting for 6-500 kV"

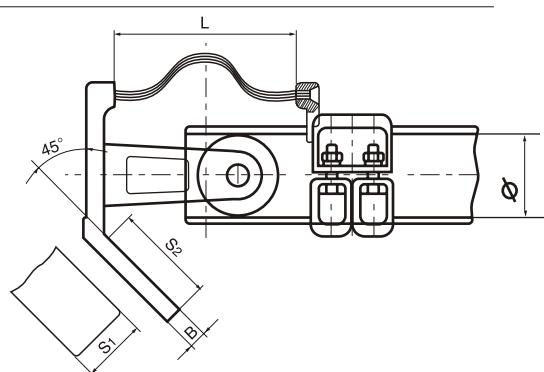
NOMENCLATURE

AIZ-23-80
AIZ-23-90
AIZ-23-100
AIZ-23-110
AIZ-23-120
AIZ-23-130

APPLICATION AREA

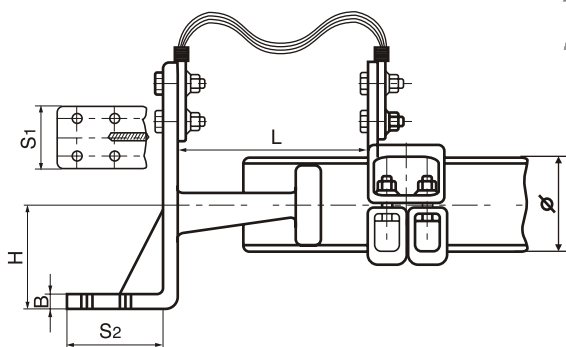
Junction clamp is used to connect the of aluminium tubular rigid bus-bar to conclusions of devices, which are horizontally orientated. The clamp has one flexible connection and mobile fastening of paw to bus. The necessary apertures for installation of hardware clamps can be pierced with special instrument, also the factory can perform this work and deliver it by clients special order. It is possible to deliver the clamp with paw, which is produced from coated copper.

Dimension H- should be mentioned in order



Brand of armature	Diameter of aluminium bus-bar, mm	Dimensions, mm					Weight. kg
		L	S1	S2	B	Φ	
AIZ-22-80	80/72	250	80	105	18	80	7,0
AIZ-22-90	90/80	250	100	115	18	90	8,0
AIZ-22-100	100/90	300	125	135	22	100	10,0
AIZ-22-120	120/110	320	130	150	22	120	11,5
AIZ-22-130	130/116	350	150	155	22	130	13,0
AIZ-22-150	150/136	380	150	165	22	150	16,0

Support type single flexible terminal junction clamp for tubular bus-bar AIZ-23-80... AIZ-23-130



Brand of armature	Diameter of aluminium bus-bar, mm	Dimensions, mm					Weight. kg
		L	S1	S2	B	Φ	
AIZ-23-80	80/72	150-160	80	130	18	80	7,0
AIZ-23-100	100/90	150-160	100	140	20	100	8,0
AIZ-23-110	110/100	150-160	125	150	20	110	10,0
AIZ-23-120	120/110	150-160	125	150	20	120	11,5
AIZ-23-130	130/116	150-160	125	150	22	130	13,0

Size H- specified with the order

AIZ-®registered trade mark of the group of companies AIZ

AIZ, RUSSIA +7-495-7412286 www.bus-bar.ru mail@bus-bar.ru
AIZ, BELARUS +375-222455264 www.aiz.by mail@aiz.by
AIZ, KAZAKHSTAN +7-717-296-5353 www.aiz.kz mail@aiz.kz
AIZ, LITHUANIA +370-62749925 www.bus-bar.eu mail@bus-bar.eu



AIZ® -24-120...150

CONVENTIONAL MARKING

AIZ - trade mark of rigid bus-bar fitting
24 - flexible terminal junction clamp
120-150 - conditional diameter of bus, mm

TR 3449-108-53937652-08 "Substation fitting for 6-500 kV"

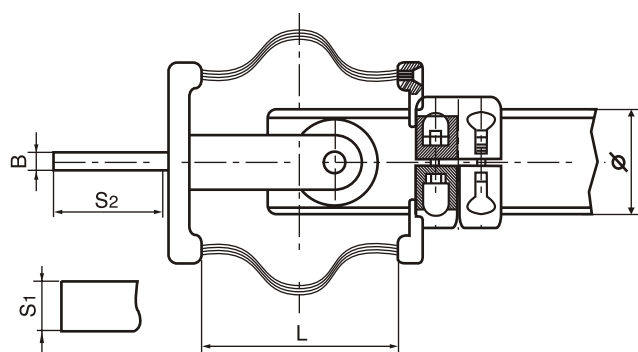
NOMENCLATURE

AIZ24-120
AIZ-24-130
AIZ-24-150

APPLICATION AREA

Junction clamp is used to connect the of aluminium tubular rigid bus-bar to conclusions of devices, which are horizontally orientated. The clamp has double flexible connection and mobile fastening of paw to bus. Double connection is necessary for high currents transmission. The apertures for installation of hardware clamps can be pierced with special instrument, also the factory can perform this work and deliver it by clients special order. It is possible to deliver the clamp with paw, which is produced from coated copper.

Support type double flexible terminal connectors AIZ-24-120, AIZ-24-130, AIZ-24-150



Brand of armature	Diameter of aluminium bus-bar, mm	Dimensions, mm					Weight, kg
		L	S1	S2	B	Φ	
AIZ-24-120	120/110	240	125	130	24	120	7,5
AIZ-24-130	130/116	240	150	160	24	130	9,2
AIZ-24-150	150/136	260	150	160	25	150	11,0

AIZ® -25-80...250

CONVENTIONAL MARKING

AIZ - trade mark of bus-bar
25 - flexible terminal junction clamp
80-250 - conditional diameter of bus, mm

TR 3449-108-53937652-08 "Substation fitting for 6-500 kV"

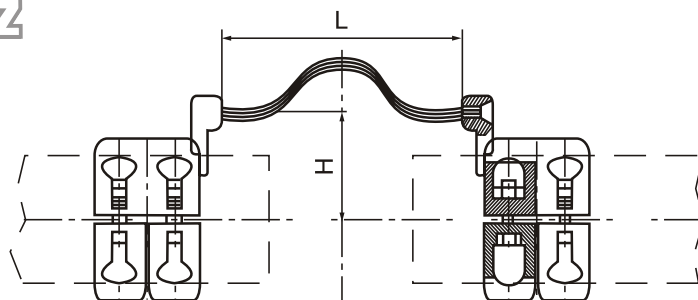
NOMENCLATURE

AIZ-25-80
AIZ-25-90
AIZ-25-100
AIZ-25-110
AIZ-25-120
AIZ-25-130
AIZ-25-150
AIZ-25-170
AIZ-25-250

APPLICATION AREA

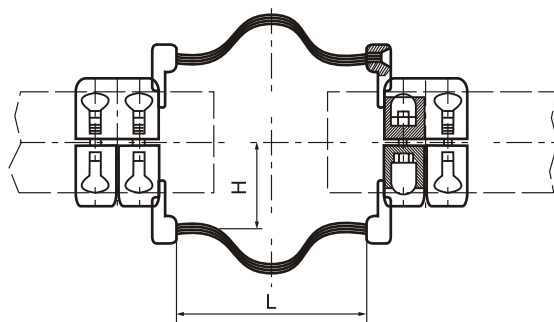
Junction clamp is used to connect two of aluminium tubular rigid bus-bars through a single flexible link.

Single flexible jumper clamps for two tubes AIZ-25-80... AIZ-25-250



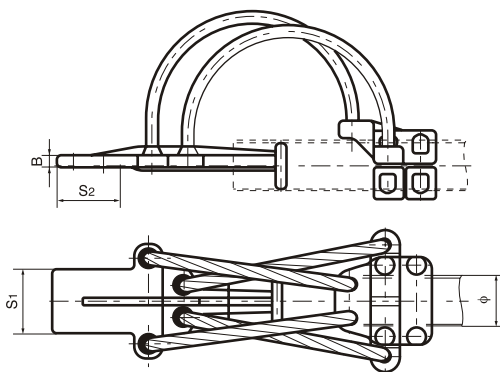
Brand of armature	Diameter of aluminium bus-bar, mm	Dimensions, mm		Weight, kg
		L	H	
AIZ-25-80	80/72	260	90	5,0
AIZ-25-90	90/80	260	90	8,7
AIZ-25-100	100/90	260	120	10,7
AIZ-25-120	120/110	280	120	10,7
AIZ-25-130	130/116	300	120	12,7
AIZ-25-150	150/136	320	150	14,0
AIZ-25-170	170/156	350	150	18,0
AIZ-25-250	250/230	450	180	20,0

Support type double flexible terminal connectors
AIZ-26-80... AIZ-26-250



Brand of armature	Diameter of aluminium bus-bar, mm	Dimensions, mm		Weight, kg
		L	H	
AIZ-26-80	80/72	260	90	6,0
AIZ-26-90	90/80	260	90	7,7
AIZ-26-100	100/90	260	120	11,7
AIZ-26-120	120/110	280	120	11,7
AIZ-26-130	130/116	300	120	13,7
AIZ-26-150	150/136	320	150	15,0
AIZ-26-170	170/156	350	150	19,0
AIZ-26-250	250/230	450	180	21,0

Flexible terminal connectors for tubular bus-bar
AIZ-27-70... AIZ-27-250



Brand of armature	Diameter of aluminium bus-bar, mm	Dimensions, mm				Weight, kg
		Φ	S1	S2	B	
AIZ-27-70	70/64	70	80	85	16	8,0
AIZ-27-80	80/72	80	80	85	16	9,0
AIZ-27-90	90/80	90	100	105	18	10,0
AIZ-27-100	100/90	100	100	105	18	10,5
AIZ-27-110	110/100	110	100	105	18	11,5
AIZ-27-120	120/110	120	100	105	18	14,5
AIZ-27-130	130/116	130	125	130	20	15,0
AIZ-27-150	150/136	150	125	130	20	18,0
AIZ-27-170	170/156	170	150	160	22	24,0
AIZ-27-200	200/180	200	150	170	22	35,0
AIZ-27-250	250/230	250	150	170	24	39,0

AIZ® -26-80..250

CONVENTIONAL MARKING

AIZ - trade mark of bus-bar
 26 - flexible terminal junction clamp
 80-250 - conditional diameter of aluminium bus, mm

TR 3449-108-53937652-08 "Substation fitting for 6-500 kV"

NOMENCLATURE

AIZ-26-80
 AIZ-26-90
 AIZ-26-100
 AIZ-26-110
 AIZ-26-120
 AIZ-26-130
 AIZ-26-150
 AIZ-26-170
 AIZ-26-250

APPLICATION AREA

Junction clamp is used to connect two of aluminium tubular rigid bus-bars through a double flexible link. Double connection ensures high currents transmission.

AIZ® -27-70...250

CONVENTIONAL MARKING

AIZ - trade mark of bus-bar
 27 - flexible terminal horizontal junction clamp
 70-250 - conditional diameter of bus, mm

TR 3449-108-53937652-08 "Substation fitting for 6-500 kV"

NOMENCLATURE

AIZ-27-70
 AIZ-27-80
 AIZ-27-90
 AIZ-27-100
 AIZ-27-110
 AIZ-27-120
 AIZ-27-130
 AIZ-27-150
 AIZ-27-170
 AIZ-27-200
 AIZ-27-250

APPLICATION AREA

Junction clamp is used to connect the of aluminium tubular rigid bus-bar to conclusions of devices, which are horizontally orientated. The clamp has one flexible rope connection and mobile fastening of paw to bus. The necessary apertures for installation of hardware clamps can be pierced with special instrument, also the factory can perform this work and deliver it by clients special order. Use type AIZ 30 to perform a contact with copper conclusions.

AIZ® -28-70...250

CONVENTIONAL MARKING

AIZ - trade mark of bus-bar
28 - flexible terminal junction clamp
70-250 - conditional diameter of aluminium bus, mm

TR 3449-108-53937652-08 "Substation fitting for 6-500 kV"

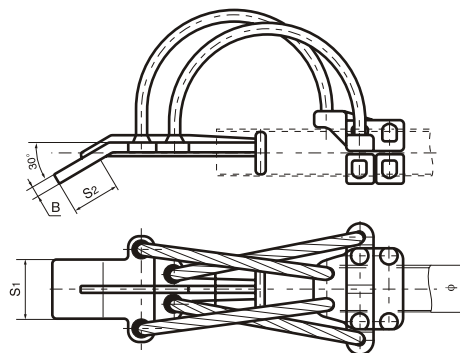
NOMENCLATURE

AIZ-28-70
AIZ-28-80
AIZ-28-90
AIZ-28-100
AIZ-28-110
AIZ-28-120
AIZ-28-130
AIZ-28-150
AIZ-28-170
AIZ-28-200
AIZ-28-250

APPLICATION AREA

The clamp was designed for joining the aluminium tubular bus-bar to conclusions of devices, which are orientated under angle for 30 degrees. The clamp has flexible connection and mobile fastening of paw to bus. The necessary apertures for installation of hardware clamps can be pierced with special instrument, also the factory can perform this work and deliver it by clients special order. It is possible to deliver the clamp with paw, which has other dimensions. Use type AIZ 31 to perform a contact with copper conclusions.

Flexible terminal connectors with inclined conclusions AIZ-28-70 - AIZ-28-250



Brand of armature	Diameter of aluminium bus-bar, mm	Dimensions, mm				Weight, kg
		Φ	S1	S2	B	
AIZ-28-70	70/64	70	80	85	16	8.0
AIZ-28-80	80/72	80	80	85	16	9.0
AIZ-28-90	90/80	90	100	105	18	10.0
AIZ-28-100	100/90	100	100	105	18	10.5
AIZ-28-110	110/100	110	100	105	18	11.5
AIZ-28-120	120/110	120	100	105	18	14.5
AIZ-28-130	130/116	130	125	130	20	15.0
AIZ-28-150	150/136	150	125	130	20	18.0
AIZ-28-170	170/156	170	150	160	22	24.0
AIZ-28-200	200/180	200	150	170	22	35.0
AIZ-28-250	250/230	250	150	170	24	39.0

AIZ® -29-70...250

CONVENTIONAL MARKING

AIZ - trade mark of bus-bar
29 - flexible terminal junction clamp
70-250 - conditional diameter of bus, mm

TR 3449-108-53937652-08 "Substation fitting for 6-500 kV"

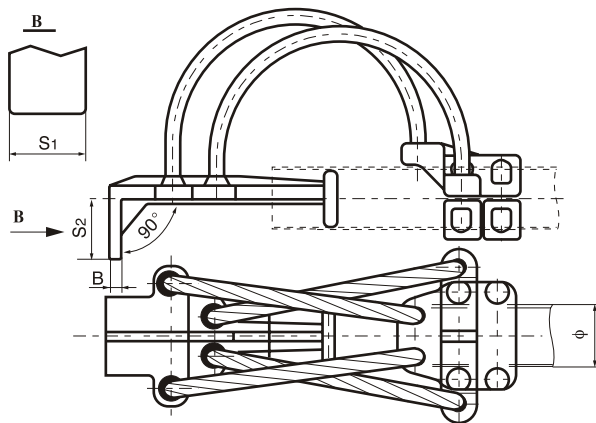
NOMENCLATURE

AIZ-29-70
AIZ-29-80
AIZ-29-90
AIZ-29-100
AIZ-29-110
AIZ-29-120
AIZ-29-130
AIZ-29-150
AIZ-29-170
AIZ-29-250

APPLICATION AREA

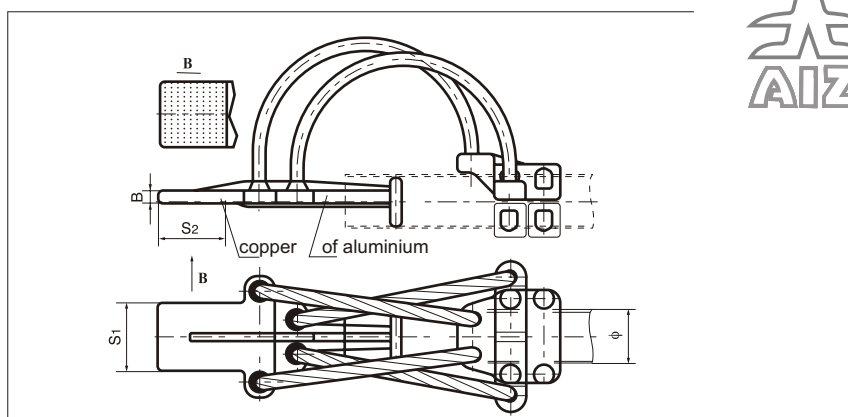
The clamp was designed for joining the aluminium tubular bus-bar to conclusions of devices, which are orientated vertically. The clamp has flexible connection and mobile fastening of paw to bus. The necessary apertures for installation of hardware clamps can be pierced with special instrument, also the factory can perform this work and deliver it by clients special order. It is possible to deliver the clamp with paw, which has other dimensions. Use type AIZ 32 to perform a contact with copper conclusions.

Flexible terminal connectors with inclined conclusions AIZ-29-70... AIZ-29-250



Brand of armature	Diameter of aluminium bus-bar, mm	Dimensions, mm				Weight, kg
		Φ	S1	S2	B	
AIZ-29-70	70/64	70	80	85	16	8.0
AIZ-29-80	80/72	80	80	85	16	9.0
AIZ-29-90	90/80	90	100	105	18	10.0
AIZ-29-100	100/90	100	100	105	18	10.5
AIZ-29-110	110/100	110	100	105	18	11.5
AIZ-29-120	120/110	120	100	105	18	14.5
AIZ-29-130	130/116	130	125	130	20	15.0
AIZ-29-150	150/136	150	125	130	20	18.0
AIZ-29-170	170/156	170	150	160	22	24.0
AIZ-29-200	200/180	200	150	170	22	35.0
AIZ-29-250	250/230	250	150	170	24	39.0

Cu-Al horizontal transition flexible connectors for tubular bus-bar AIZ-30-70... AIZ-30-250



Brand of armature	Diameter of aluminium bus-bar, mm	Dimensions, mm				Weight, kg
		Φ	S1	S2	B	
AIZ-30-70	70/64	70	80	85	16	8.0
AIZ-30-80	80/72	80	80	85	16	9.0
AIZ-30-90	90/80	90	100	105	18	10.0
AIZ-30-100	100/90	100	100	105	18	10.5
AIZ-30-110	110/100	110	100	105	18	11.5
AIZ-30-120	120/110	120	100	105	18	14.5
AIZ-30-130	130/116	130	125	130	20	15.0
AIZ-30-150	150/136	150	125	130	20	18.0
AIZ-30-170	170/156	170	150	160	22	24.0
AIZ-30-200	200/180	200	150	170	22	35.0
AIZ-30-250	250/230	250	150	170	24	39.0

AIZ®-30-70..250

CONVENTIONAL MARKING

AIZ - trade mark of bus-bar
30 - terminal junction clamp with double flexible connection
70-250 - conditional diameter of of aluminium bus, mm

TR 3449-108-53937652-08 "Substation fitting for 6-500 kV"

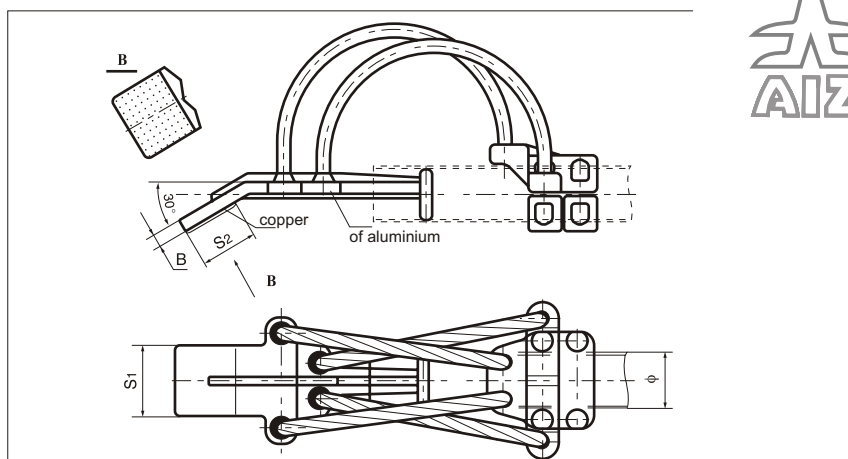
NOMENCLATURE

AIZ-30-70
AIZ-30-80
AIZ-30-90
AIZ-30-100
AIZ-30-110
AIZ-30-120
AIZ-30-130
AIZ-30-150
AIZ-30-170
AIZ-30-200
AIZ-30-250

APPLICATION AREA

Junction clamp is used to connect the of aluminium tubular rigid bus-bar to conclusions of devices, which are horizontally orientated. The clamp has flexible connection and mobile fastening of paw to bus. The necessary apertures for installation of hardware clamps can be pierced with special instrument, also the factory can perform this work and deliver it by clients special order. Paw is coated by copper.

Cu-Al transition flexible connectors for tubular bus-bar with inclined conclusions AIZ-31-70... AIZ-31-250



Brand of armature	Diameter of aluminium bus-bar, mm	Dimensions, mm				Weight, kg
		Φ	S1	S2	B	
AIZ-31-70	70/64	70	80	85	16	8.0
AIZ-31-80	80/72	80	80	85	16	9.0
AIZ-31-90	90/80	90	100	105	18	10.0
AIZ-31-100	100/90	100	100	105	18	10.5
AIZ-31-110	110/100	110	100	105	18	11.5
AIZ-31-120	120/110	120	100	105	18	14.5
AIZ-31-130	130/116	130	125	130	20	15.0
AIZ-31-150	150/136	150	125	130	20	18.0
AIZ-31-170	170/156	170	150	160	22	24.0
AIZ-31-200	200/180	200	150	170	22	35.0
AIZ-31-250	250/230	250	150	170	24	39.0

AIZ®-31-70...250

CONVENTIONAL MARKING

AIZ - trade mark of bus-bar
31 - flexible terminal junction clamp for inclined conclusions
70-250 - conditional diameter of bus, mm

TR 3449-108-53937652-08 "Substation fitting for 6-500 kV"

NOMENCLATURE

AIZ-31-70
AIZ-31-80
AIZ-31-90
AIZ-31-100
AIZ-31-110
AIZ-31-120
AIZ-31-130
AIZ-31-150
AIZ-31-170
AIZ-31-200
AIZ-31-250

APPLICATION AREA

Junction clamp is used to connect the of aluminium tubular rigid bus-bar to conclusions of devices, which are orientated under angel for 30 degrees. The clamp has flexible connection and mobile fastening of paw to bus. The necessary apertures for installation of hardware clamps can be pierced with special instrument, also the factory can perform this work and deliver it by clients special order. Paw is coated by copper.

AIZ®-registered trade mark of the group of companies AIZ

AIZ, RUSSIA +7-495-7412286
AIZ, BELARUS +375-222455264
AIZ, KAZAKHSTAN +7-717-296-5353
AIZ, LITHUANIA +370-62749925

www.bus-bar.ru
www.aiz.by
www.aiz.kz
www.bus-bar.eu

mail@bus-bar.ru
mail@aiz.by
mail@aiz.kz
mail@bus-bar.eu

AIZ

AIZ® -32-70...250

CONVENTIONAL MARKING

AIZ - trade mark of rigid bus-bar fitting
32 - terminal junction clamp with flexible connection
70-250 - conditional diameter of of aluminium bus, mm

TR 3449-108-53937652-08 "Substation fitting for 6-500 kV"

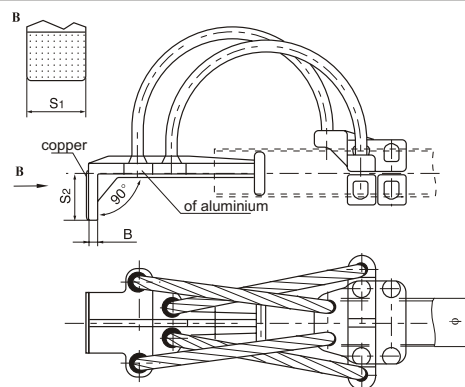
NOMENCLATURE

AIZ-32-70
AIZ-32-80
AIZ-32-90
AIZ-32-100
AIZ-32-110
AIZ-32-120
AIZ-32-130
AIZ-32-150
AIZ-32-170
AIZ-32-200
AIZ-32-250

APPLICATION AREA

The clamp was designed for joining the of aluminium tubular bus-bar to conclusions of devices, which are orientated vertically. The clamp has flexible connection and mobile fastening of paw to bus. The necessary apertures for installation of hardware clamps can be pierced with special instrument, also the factory can perform this work and deliver it by clients special order. It is possible to deliver the clamp with paw, which has other dimensions. Clamp is made for connection of copper conclusions.

Cu-Al transition flexible connectors with vertical conclusions for tubular bus-bar AIZ-32-70... AIZ-32-250



Brand of armature	Diameter of aluminium bus-bar, mm	Dimensions, mm				Weight. kg
		Φ	S1	S2	B	
AIZ-32-70	70/64	70	80	85	16	8.0
AIZ-32-80	80/72	80	80	85	16	9.0
AIZ-32-90	90/80	90	100	105	18	10.0
AIZ-32-100	100/90	100	100	105	18	10.5
AIZ-32-110	110/100	110	100	105	18	11.5
AIZ-32-120	120/110	120	100	105	18	14.5
AIZ-32-130	130/116	130	125	130	20	15.0
AIZ-32-150	150/136	150	125	130	20	18.0
AIZ-32-170	170/156	170	150	160	22	24.0
AIZ-32-200	200/180	200	150	170	22	35.0
AIZ-32-250	250/230	250	150	170	24	39.0

AIZ® -33-70...250

CONVENTIONAL MARKING

AIZ - trade mark of bus-bar
33 - flexible terminal junction clamp with flexible connection
70-250 - conditional diameter of bus, mm

TR 3449-108-53937652-08 "Substation fitting for 6-500 kV"

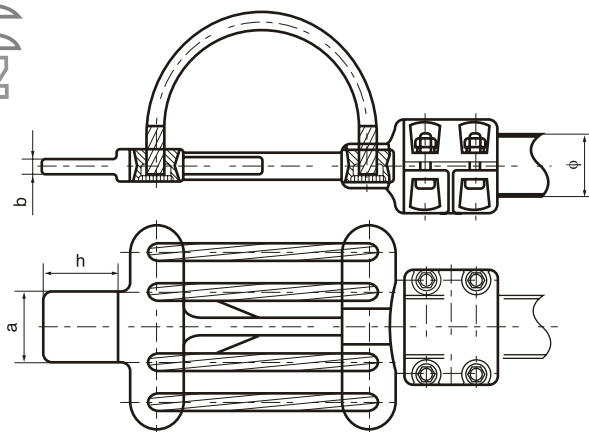
NOMENCLATURE

AIZ-33-70
AIZ-33-80
AIZ-33-90
AIZ-33-100
AIZ-33-110
AIZ-33-120
AIZ-33-130
AIZ-33-150
AIZ-33-170
AIZ-33-250

APPLICATION AREA

The clamp was designed for joining the of aluminium tubular bus-bar to conclusions of devices, which are orientated horizontally. The clamp has flexible connection and mobile fastening of paw to bus along its axis. The necessary apertures for installation of hardware clamps can be pierced with special instrument, also the factory can perform this work and deliver it by clients special order. It is possible to deliver the clamp with paw, which has other dimensions. Use type AIZ 36 to perform a contact with copper conclusions.

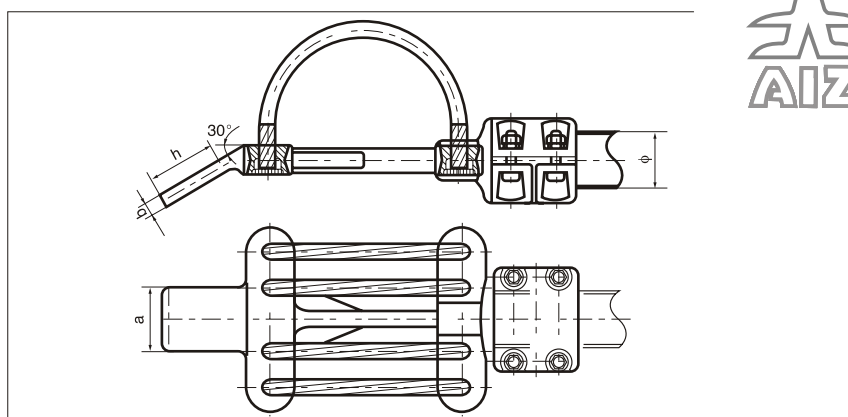
Flexible clamps for tubular bus-bar AIZ -33-70- AIZ -33-250



Brand of armature	Diameter of aluminium bus-bar, mm	Dimensions, mm				Weight. kg
		Ø	a	h	b	
AIZ-33-70	70/64	70	80	85	16	8.0
AIZ-33-80	80/72	80	80	85	16	9.0
AIZ-33-90	90/80	90	100	105	18	10.0
AIZ-33-100	100/90	100	100	105	18	10.5
AIZ-33-110	110/100	110	100	105	18	11.5
AIZ-33-120	120/110	120	100	105	18	14.5
AIZ-33-130	130/116	130	125	130	20	15.0
AIZ-33-150	150/136	150	125	130	20	18.0
AIZ-33-170	170/156	170	150	130	20	24.0
AIZ-33-200	200/180	200	150	160	25	35.0
AIZ-33-250	250/230	250	150	160	25	39.0

Support type single flexible terminal junction clamp with inclined paw for tubular bus-bar AIZ-34-70 - AIZ-34-250

AIZ®-34-70..250



Brand of armature	Diameter of aluminium bus-bar, mm	Dimensions, mm				Weight, kg
		Ø	a	h	b	
AIZ-34-70	70/64	70	80	85	16	8.0
AIZ-34-80	80/72	80	80	85	16	9.0
AIZ-34-90	90/80	90	100	105	18	10.0
AIZ-34-100	100/90	100	100	105	18	10.5
AIZ-34-110	110/100	110	100	105	18	11.5
AIZ-34-120	120/110	120	100	105	18	14.5
AIZ-34-130	130/116	130	125	130	20	15.0
AIZ-34-150	150/136	150	125	130	20	18.0
AIZ-34-170	170/156	170	150	130	20	24.0
AIZ-34-200	200/180	200	150	160	25	35.0
AIZ-34-250	250/230	250	150	160	25	39.0

CONVENTIONAL MARKING

AIZ - trade mark of bus-bar
34 - terminal junction clamp
70-250 - conditional diameter of of aluminium bus, mm

TR 3449-108-53937652-08 "Substation fitting for 6-500 kV"

NOMENCLATURE

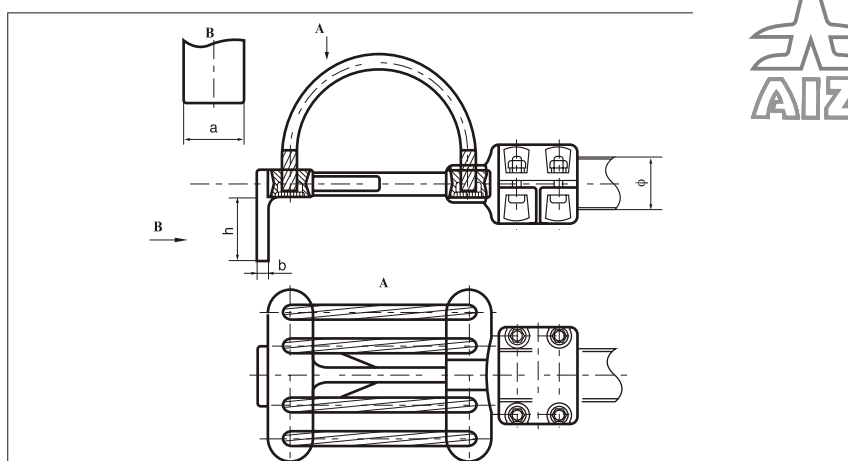
AIZ-34-70
AIZ-34-80
AIZ-34-90
AIZ-34-100
AIZ-34-110
AIZ-34-120
AIZ-34-130
AIZ-34-150
AIZ-34-170
AIZ-34-200
AIZ-34-250

APPLICATION AREA

The clamp was designed for joining the of aluminium tubular bus-bar to conclusions of devices, which are orientated under angle for 30 degrees. The clamp has flexible connection and mobile fastening of paw to bus along its axis. The necessary apertures for installation of hardware clamps can be pierced with special instrument, also the factory can perform this work and deliver it by clients special order. Use type AIZ 37 to perform a contact with copper conclusions.

Flexible clamps for tubular bus-bar AIZ -35-70- AIZ -35-250

AIZ®-35-70...250



Brand of armature	Diameter of aluminium bus-bar, mm	Dimensions, mm				Weight, kg
		Ø	a	h	b	
AIZ-35-70	70/64	70	80	85	16	8.0
AIZ-35-80	80/72	80	80	85	16	9.0
AIZ-35-90	90/80	90	100	105	18	10.0
AIZ-35-100	100/90	100	100	105	18	10.5
AIZ-35-110	110/100	110	100	105	18	11.5
AIZ-35-120	120/110	120	100	105	18	14.5
AIZ-35-130	130/116	130	125	130	20	15.0
AIZ-35-150	150/136	150	125	130	20	18.0
AIZ-35-170	170/156	170	150	130	20	24.0
AIZ-35-200	200/180	200	150	160	25	35.0
AIZ-35-250	250/230	250	150	160	25	39.0

CONVENTIONAL MARKING

AIZ - trade mark of bus-bar
35 - terminal junction clamp for inclined conclusions
70-250 - conditional diameter of bus, mm

TR 3449-108-53937652-08 "Substation fitting for 6-500 kV"

NOMENCLATURE

AIZ-35-70
AIZ-35-80
AIZ-35-90
AIZ-35-100
AIZ-35-110
AIZ-35-120
AIZ-35-130
AIZ-35-150
AIZ-35-170
AIZ-35-200
AIZ-35-250

APPLICATION AREA

The clamp was designed for joining the of aluminium tubular bus-bar to conclusions of devices, which are orientated vertically. The clamp has flexible connection and mobile fastening of paw to bus along its axis. The necessary apertures for installation of hardware clamps can be pierced with special instrument, also the factory can perform this work and deliver it by clients special order. It is possible to deliver the clamp with paw, which has other dimensions. Use type AIZ 38 to perform a contact with copper conclusions.

AIZ® -36-70...250

CONVENTIONAL MARKING

AIZ - trade mark of rigid bus-bar fitting
36 - terminal junction clamp
70-250 - conditional diameter of bus, mm

TR 3449-108-53937652-08 "Substation fitting for 6-500 kV"

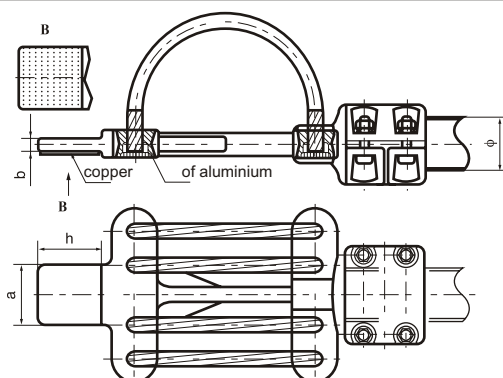
NOMENCLATURE

AIZ-36-70
AIZ-36-80
AIZ-36-90
AIZ-36-100
AIZ-36-110
AIZ-36-120
AIZ-36-130
AIZ-36-150
AIZ-36-170
AIZ-36-200
AIZ-36-250

APPLICATION AREA

The clamp was designed for joining the of aluminium tubular bus-bar to conclusions of devices, which are orientated horizontally. The clamp has flexible connection and mobile fastening of paw to bus along its axis. The necessary apertures for installation of hardware clamps can be pierced with special instrument, also the factory can perform this work and deliver it by clients special order. It is possible to deliver the clamp with paw, which has other dimensions. Clamp is made for connection of copper conclusions.

Cu-Al transition flexible clamps for tubular bus-bar AIZ-36-70 - AIZ-36-250



Brand of armature	Diameter of aluminium bus-bar, mm	Dimensions, mm				Weight, kg
		Ø	a	h	b	
AIZ-36-70	70/64	70	80	85	16	8.0
AIZ-36-80	80/72	80	80	85	16	9.0
AIZ-36-90	90/80	90	100	105	18	10.0
AIZ-36-100	100/90	100	100	105	18	10.5
AIZ-36-110	110/100	110	100	105	18	11.5
AIZ-36-120	120/110	120	100	105	18	14.5
AIZ-36-130	130/116	130	125	130	20	15.0
AIZ-36-150	150/136	150	125	130	20	18.0
AIZ-36-170	170/156	170	150	130	20	24.0
AIZ-36-200	200/180	200	150	160	25	35.0
AIZ-36-250	250/230	250	150	160	25	39.0

AIZ® -37-70...250

CONVENTIONAL MARKING

AIZ - trade mark of bus-bar
37 - terminal junction clamp
70-250 - conditional diameter of bus, mm

TR 3449-108-53937652-08 "Substation fitting for 6-500 kV"

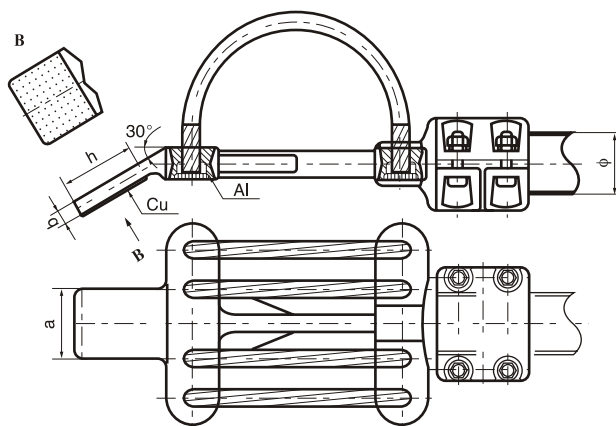
NOMENCLATURE

AIZ-37-70
AIZ-37-80
AIZ-37-90
AIZ-37-100
AIZ-37-110
AIZ-37-120
AIZ-37-130
AIZ-37-150
AIZ-37-170
AIZ-37-200
AIZ-37-250

APPLICATION AREA

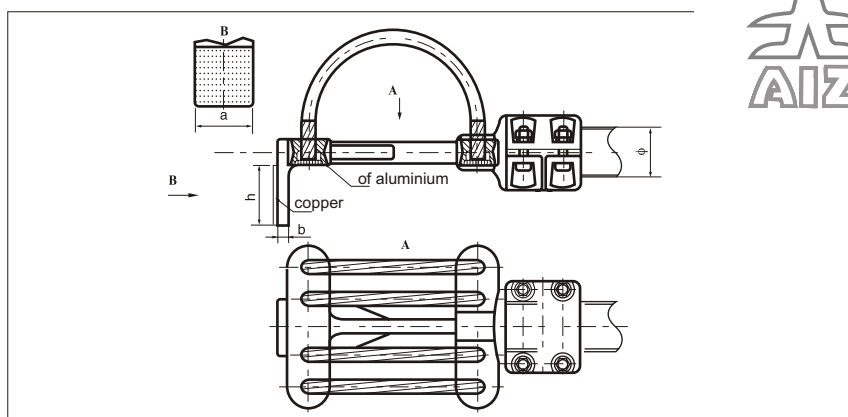
The clamp was designed for joining the of aluminium tubular bus-bar to conclusions of devices, which are orientated under angle for 30 degrees. The clamp has flexible connection and mobile fastening of paw to bus along its axis. The necessary apertures for installation of hardware clamps can be pierced with special instrument, also the factory can perform this work and deliver it by clients special order. It is possible to deliver the clamp with paw, which has other dimensions. Clamp is made for connection of copper conclusions.

Cu-Al transition flexible clamps for tubular bus-bar AIZ -37-70- AIZ -37-250



Brand of armature	Diameter of aluminium bus-bar, mm	Dimensions, mm				Weight, kg
		Ø	a	h	b	
AIZ-37-70	70/64	70	80	85	16	8.0
AIZ-37-80	80/72	80	80	85	16	9.0
AIZ-37-90	90/80	90	100	105	18	10.0
AIZ-37-100	100/90	100	100	105	18	10.5
AIZ-37-110	110/100	110	100	105	18	11.5
AIZ-37-120	120/110	120	100	105	18	14.5
AIZ-37-130	130/116	130	125	130	20	15.0
AIZ-37-150	150/136	150	125	130	20	18.0
AIZ-37-170	170/156	170	150	130	20	24.0
AIZ-37-200	200/180	200	150	160	25	35.0
AIZ-37-250	250/230	250	150	160	25	39.0

Cu-Al transition flexible clamps for tubular bus-bar AIZ-38-70 - AIZ-38-250



Brand of armature	Diameter of aluminium bus-bar, mm	Dimensions, mm				Weight, kg
		Ø	a	h	b	
AIZ-38-70	70/64	70	80	85	16	8.0
AIZ-38-80	80/72	80	80	85	16	9.0
AIZ-38-90	90/80	90	100	105	18	10.0
AIZ-38-100	100/90	100	100	105	18	10.5
AIZ-38-110	110/100	110	100	105	18	11.5
AIZ-38-120	120/110	120	100	105	18	14.5
AIZ-38-130	130/116	130	125	130	20	15.0
AIZ-38-150	150/136	150	125	130	20	18.0
AIZ-38-170	170/156	170	150	130	20	24.0
AIZ-38-200	200/180	200	150	160	25	35.0
AIZ-38-250	250/230	250	150	160	25	39.0

AIZ® -38-70..250

CONVENTIONAL MARKING

AIZ - trade mark of bus-bar
38 - terminal junction clamp
70-250 - conditional diameter of bus, mm

TR 3449-108-53937652-08 "Substation fitting for 6-500 kV"

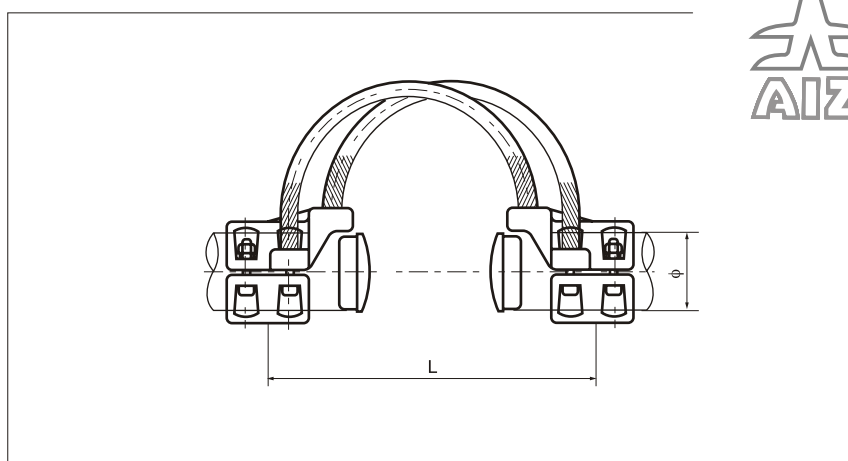
NOMENCLATURE

AIZ-38-70
AIZ-38-80
AIZ-38-90
AIZ-38-100
AIZ-38-110
AIZ-38-120
AIZ-38-130
AIZ-38-150
AIZ-38-170
AIZ-38-200
AIZ-38-250

APPLICATION AREA

The clamp was designed for joining the of aluminium tubular bus-bar to conclusions of devices, which are orientated vertically. The clamp has flexible connection and mobile fastening of paw to bus along its axis. The necessary apertures for installation of hardware clamps can be pierced with special instrument, also the factory can perform this work and deliver it by clients special order. Clamp is made for connection of copper conclusions.

Tubular bus-bar flexible fittings AIZ -39-70- AIZ -39-250



Brand of armature	Diameter of aluminium bus-bar, mm	Dimensions, mm		Weight, kg
		Ø	L	
AIZ-39-70	70/64	70	400	6.0
AIZ-39-80	80/72	80	400	7.0
AIZ-39-90	90/80	90	420	8.0
AIZ-39-100	100/90	100	420	8.5
AIZ-39-110	110/100	110	460	9.5
AIZ-39-120	120/110	120	460	12.5
AIZ-39-130	130/116	130	480	13.0
AIZ-39-150	150/136	150	500	16.0
AIZ-39-170	170/156	170	500	22.0
AIZ-39-200	200/180	200	520	33.0
AIZ-39-250	250/230	250	520	37.0

AIZ® -39-70...250

CONVENTIONAL MARKING

AIZ - trade mark of bus-bar
39 - flexible junction clamp
70-250 - conditional diameter of bus, mm

TR 3449-108-53937652-08 "Substation fitting for 6-500 kV"

NOMENCLATURE

AIZ-39-70
AIZ-39-80
AIZ-39-90
AIZ-39-100
AIZ-39-110
AIZ-39-120
AIZ-39-130
AIZ-39-150
AIZ-39-170
AIZ-39-200
AIZ-39-250

APPLICATION AREA

Clamp is designed to connect two of aluminium tubes of rigid bus-bar by flexible coupling of wires.

AIZ®-registered trade mark of the group of companies AIZ

AIZ, RUSSIA +7-495-7412286
AIZ, BELARUS +375-222455264
AIZ, KAZAKHSTAN +7-717-296-5353
AIZ, LITHUANIA +370-62749925

www.bus-bar.ru
www.aiz.by
www.aiz.kz
www.bus-bar.eu

mail@bus-bar.ru
mail@aiz.by
mail@aiz.kz
mail@bus-bar.eu

AIZ

AIZ®-40-150...250

CONVENTIONAL MARKING

AIZ - trade mark of bus-bar
40 - double flexible junction clamp
150-250 - conditional diameter of aluminium bus, mm
TR 3449-108-53937652-08 "Substation fitting for 6-500 kV"

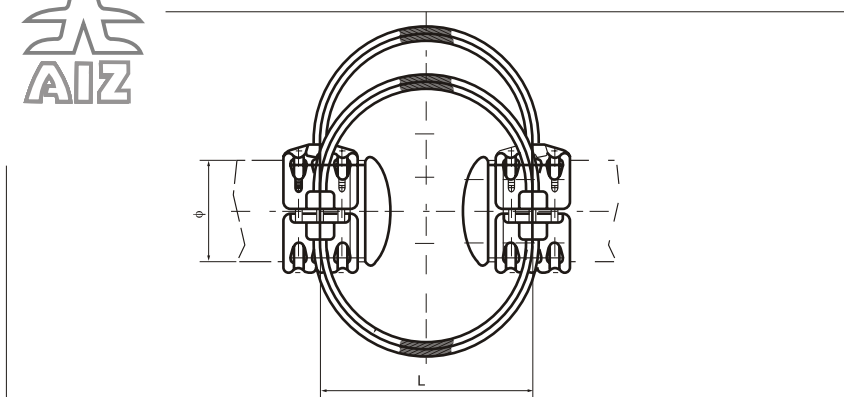
NOMENCLATURE

AIZ-40-150
AIZ-40-170
AIZ-40-200
AIZ-40-250

APPLICATION AREA

Clamp is designed to connect two of aluminium tubes of rigid bus-bar by double flexible coupling of wires. Suitable for large current loads.

Support type tubular bus-bar with double flexible fitting AIZ-40-150 - AIZ-40-250



Brand of armature	Diameter of aluminium bus-bar, mm	Dimensions, mm		Weight, kg
		Ø	L	
AIZ-40-150	150/136	150	480	16.0
AIZ-40-170	170/156	170	500	22.0
AIZ-40-200	200/180	200	520	33.0
AIZ-40-250	250/230	250	520	37.0

AIZ®-41-130...250

CONVENTIONAL MARKING

AIZ - trade mark of bus-bar
41 - junction clamp
130-250 - conditional diameter of bus, mm
TR 3449-108-53937652-08 "Substation fitting for 6-500 kV"

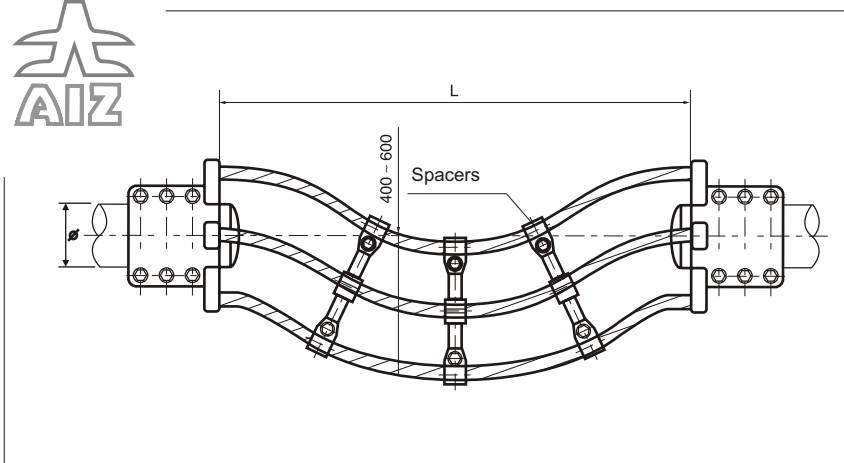
NOMENCLATURE

AIZ-41-130
AIZ-41-150
AIZ-41-170
AIZ-41-200
AIZ-41-250

APPLICATION AREA

Clamp is designed to connect two of aluminium tubes of rigid bus-bar located at a distance (2-5 meters). The design of clamp includes 4-6 wires with the splitting phase connection. The circular arrangement of wires of splitting phase excludes corona discharge of the ends of buses and there is no need for corona spheres. Exploited to connect tubes of rigid bus-bar for a long distance and for the large current loads and is suitable to install on different levels. The dimension L is determined according to designation. Please indicate the value when place the

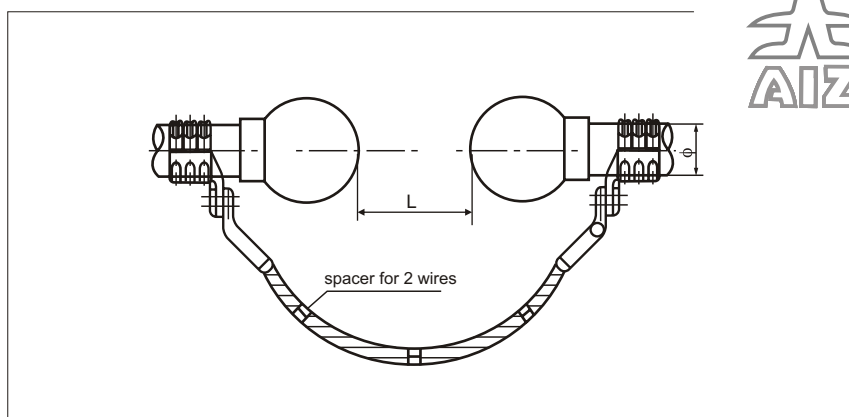
Flexible junction clamp for tubular bus-bar for high current load AIZ -41-130- AIZ -41-250



Brand of armature	Diameter of aluminium bus-bar, mm	Dimensions, mm				Weight, kg
		Ø	Quantity of wires	L	current, A	
AIZ-41-130	130/116	130	4	2000	3150	16.0
AIZ-41-150	150/136	150	4	2000	3150	22.0
AIZ-41-170	170/156	170	6	4000	4800	33.0
AIZ-41-200	200/180	200	6	5000	7800	37.0
AIZ-41-250	250/230	250	6	5000	7800	39.2

Flexible junction clamp for tubular bus-bar for current to 5600 A
AIZ-42-130 - AIZ-42-250

AIZ®-42-130..250



Brand of armature	Diameter of aluminium bus-bar, mm	Dimensions, mm				Weight, kg
		Ø	Quantity of wires	L	current, A	
AIZ-42-130	130/116	130	2	2000	5600	12.0
AIZ-42-150	150/136	150	2	2000	5600	18.0
AIZ-42-170	170/156	170	2	4000	5600	24.0
AIZ-42-200	200/180	200	2	5000	5600	32.0
AIZ-42-250	250/230	250	2	5000	5600	34.2

CONVENTIONAL MARKING

AIZ - trade mark of bus-bar
 42 - flexible junction clamp for 5600 A current
 130-250 - conditional diameter of aluminium bus, mm

TR 3449-108-53937652-08 "Substation fitting for 6-500 kV"

NOMENCLATURE

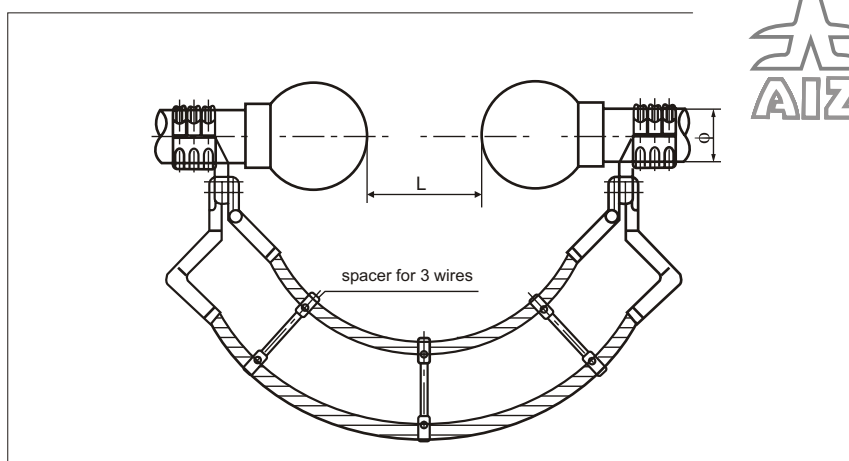
AIZ-42-130
 AIZ-42-150
 AIZ-42-170
 AIZ-42-200
 AIZ-42-250

APPLICATION AREA

Clamp is designed to connect two of aluminium tubes of rigid bus-bar. The design of clamp includes 2 wires with the splitting phase connection. The clamp contains two anticorona balls on the ends of bus-bar for the protection from corona discharge. Exploited when is necessary to compound bus with high currents to 5600A. Please, specify the length of connecting wires before the ordering.

Flexible junction clamp for two tubular bus-bar for current to 8000 A
AIZ -43-150- AIZ -43-250

AIZ®-43-150...250



Brand of armature	Diameter of aluminium bus-bar, mm	Dimensions, mm				Weight, kg
		Ø	Quantity of wires	L, max	current, A	
AIZ-43-150	150/136	150	3	2000	8000	19.0
AIZ-43-170	170/156	170	3	4000	8000	25.0
AIZ-43-200	200/180	200	3	5000	8000	34.0
AIZ-43-250	250/230	250	3	5000	8000	36.2

CONVENTIONAL MARKING

AIZ - trade mark of bus-bar
 43 - junction clamp for two of aluminium tubes for 8000 A current
 150-250 - conditional diameter of aluminium of bus, mm

TR 3449-108-53937652-08 "Substation fitting for 6-500 kV"

NOMENCLATURE

AIZ-43-150
 AIZ-43-170
 AIZ-43-200
 AIZ-43-250

APPLICATION AREA

Clamp is designed to connect two of aluminium tubes of rigid bus-bar. The design of clamp includes 3 wires with the splitting phase connection. The clamp contains two anticorona balls on the ends of bus-bar for the protection from corona discharge. Exploited when is necessary to compound bus with high currents to 8000A. Please, specify the length of connecting wires before the ordering.

AIZ®-44-70...170

CONVENTIONAL MARKING

AIZ - trade mark of bus-bar

44 - ordinary terminal

70-170 - conditional diameter of of aluminium bus, mm

TR 3449-108-53937652-08 "Substation fitting for 6-500 kV"

NOMENCLATURE

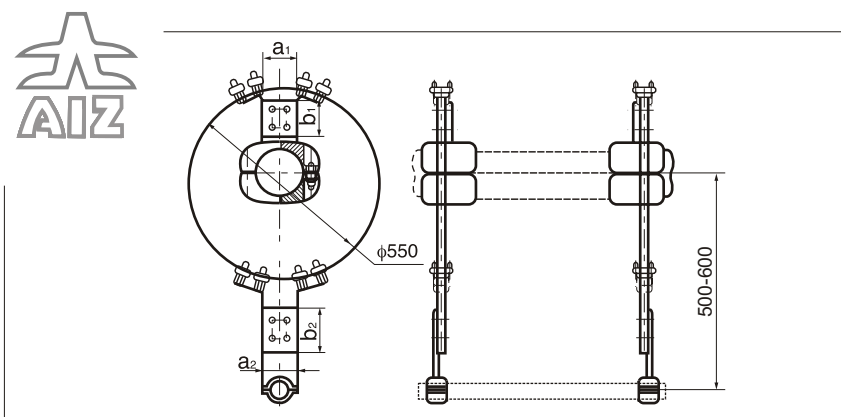
AIZ-44-70
AIZ-44-80
AIZ-44-90
AIZ-44-100
AIZ-44-110
AIZ-44-120
AIZ-44-130
AIZ-44-150
AIZ-44-170

APPLICATION AREA

The terminal is intended to implement branch from the main round bus-bar on conclusions of devices or other of aluminium tube of rigid bus-bar. The terminal carries out function of vibration damper and reduces corona discharge because of a ring. The terminal consists of vibrating ring AIZ-47, clamp AIZ-7.

With necessity of other configuration of the terminal is possible to use vibrating ring with other armature of rigid bus-bar.

Ordinary terminal bus-bar AIZ-44-70 - AIZ-44-170



Brand of armature	Diameter of aluminium bus-bar, mm	Dimensions, mm				Type of wire's ring
		a1	b1	a2	b2	
AIZ-44-70	70/64	80	110	100	120	AC185-240
AIZ-44-80	80/72	80	110	100	120	AC185-240
AIZ-44-90	90/80	80	110	100	120	AC185-240
AIZ-44-100	100/90	100	110	100	120	AC185-240
AIZ-44-110	110/100	100	110	100	120	AC185-240
AIZ-44-120	120/110	100	110	100	120	AC185-240
AIZ-44-130	130/116	125	185	100	190	AC185-240
AIZ-44-150	150/136	125	185	100	190	AC185-240
AIZ-44-170	170/156	125	185	100	190	AC185-240

AIZ®-45-70...170

CONVENTIONAL MARKING

AIZ - trade mark of bus-bar

45 - double terminal of rigid bus-bar

70-250 - conditional diameter of bus, mm

TR 3449-108-53937652-08 "Substation fitting for 6-500 kV"

NOMENCLATURE

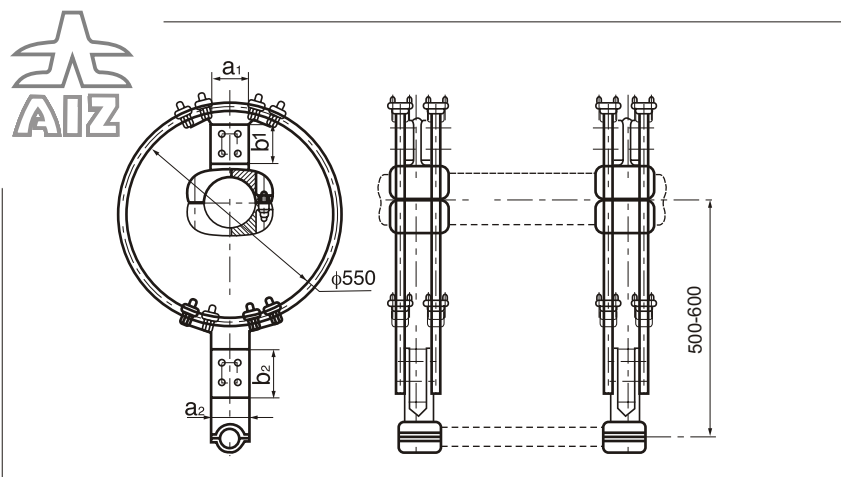
AIZ-44-70
AIZ-45-80
AIZ-45-90
AIZ-45-100
AIZ-45-110
AIZ-45-120
AIZ-45-130
AIZ-45-150
AIZ-45-170

APPLICATION AREA

The terminal is intended to implement branch from the main round bus-bar on conclusions of devices or other of aluminium tube of rigid bus-bar. The terminal carries out function of vibration damper and reduces corona discharge because of a ring. The terminal consists of vibrating ring AIZ-47 and special clamps.

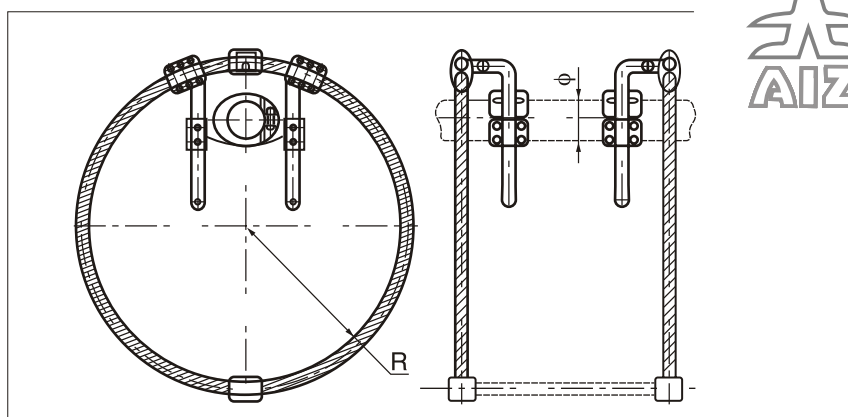
With necessity of other configuration of the terminal is possible to use vibrating ring with other armature of rigid bus-bar.

Double terminal bus-bar AIZ-45-70- AIZ-45-170



Brand of armature	Diameter of aluminium bus-bar, mm	Dimensions, mm				Type of wire's ring
		a1	b1	a2	b2	
AIZ-45-70	70/64	80	110	100	120	AC185-240
AIZ-45-80	80/72	80	110	100	120	AC185-240
AIZ-45-90	90/80	80	110	100	120	AC185-240
AIZ-45-100	100/90	100	110	100	120	AC185-240
AIZ-45-110	110/100	100	110	100	120	AC185-240
AIZ-45-120	120/110	100	110	100	120	AC185-240
AIZ-45-130	130/116	125	185	100	190	AC185-240
AIZ-45-150	150/136	125	185	100	190	AC185-240
AIZ-45-170	170/156	125	185	100	190	AC185-240

Adjustable damping ring AIZ-46-70 - AIZ-46-250



Brand of armature	Diameter of aluminium bus-bar, mm	Dimensions, mm		Type of wire's ring
		Φ	R	
AIZ-46-70	70/64	70	300	AC185-240
AIZ-46-80	80/72	80	300	AC185-240
AIZ-46-90	90/80	90	300	AC185-240
AIZ-46-100	100/90	100	400	AC185-240
AIZ-46-110	110/100	110	400	AC185-240
AIZ-46-120	120/110	120	450	AC330
AIZ-46-130	130/116	130	450	AC500
AIZ-46-150	150/136	150	450	AC600
AIZ-46-170	170/156	170	500	AC600
AIZ-46-200	200/180	200	500	AC600
AIZ-46-250	250/230	250	500	AC600

AIZ®-46-70..250

CONVENTIONAL MARKING

AIZ - trade mark of bus-bar
46 - rigid bus-bar terminal, adjustable
70-250 - rigid bus-bar terminal, adjustable

TR 3449-108-53937652-08 "Substation fitting for 6-500 kV"

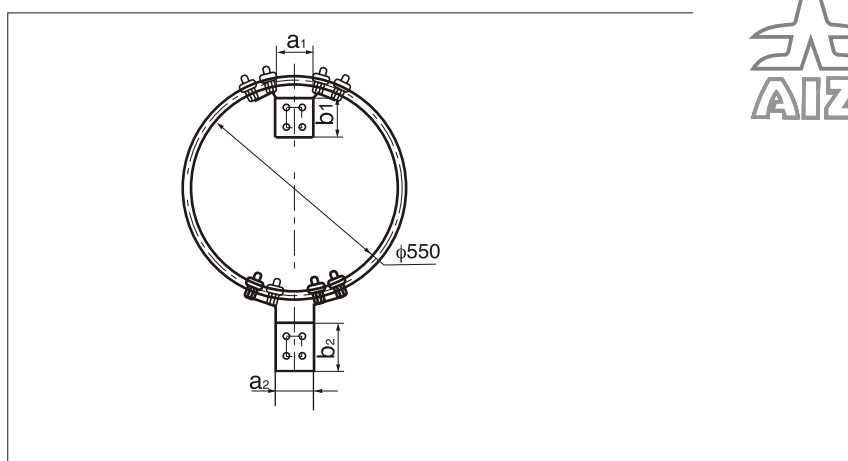
NOMENCLATURE

AIZ-46-70
AIZ-46-80
AIZ-46-90
AIZ-46-100
AIZ-46-110
AIZ-46-120
AIZ-46-130
AIZ-46-150
AIZ-46-170
AIZ-46-200
AIZ-46-250

APPLICATION AREA

The terminal is intended to implement branch from the main round bus-bar on conclusions of devices or other of aluminium tube of rigid bus-bar. The terminal carries out function of vibration damper and reduces corona discharge because of a ring. Terminal AIZ-46 has a height adjustment of main bus, relative to the center of vibrating ring.

Ring of terminal AIZ -47-70- AIZ -47-250



Brand of armature	Diameter of aluminium bus-bar, mm	Dimensions, mm				Type of wire's ring
		a1	b1	a2	b2	
AIZ-45-70	70/64	80	110	100	120	AC185-240
AIZ-45-80	80/72	80	110	100	120	AC185-240
AIZ-45-90	90/80	80	110	100	120	AC185-240
AIZ-45-100	100/90	100	110	100	120	AC185-240
AIZ-45-110	110/100	100	110	100	120	AC185-240
AIZ-45-120	120/110	100	110	100	120	AC185-240
AIZ-45-130	130/116	125	185	100	190	AC185-240
AIZ-45-150	150/136	125	185	100	190	AC185-240
AIZ-45-170	170/156	125	185	100	190	AC185-240
AIZ-47-200	200/180	125	185	100	190	AC240-300
AIZ-47-250	250/230	125	185	100	190	AC300-500

AIZ®-47-70...250

CONVENTIONAL MARKING

AIZ - trade mark of bus-bar
47 - ring of terminal, which absorbs vibration
70- 250 - conditional diameter of bus, mm

TR 3449-108-53937652-08 "Substation fitting for 6-500 kV"

NOMENCLATURE

AIZ-47-70
AIZ-47-80
AIZ-47-90
AIZ-47-100
AIZ-47-110
AIZ-47-120
AIZ-47-130
AIZ-47-150
AIZ-47-170
AIZ-47-200
AIZ-47-250

APPLICATION AREA

Ring of terminal is intended to implement branch terminals from the main round bus-bar on other of aluminium tube of rigid bus-bar. The ring of terminal carries out function of vibration damper and reduces corona discharge because of the reason that there is no field tension inside the ring. Ring is attended with the different types of clamps of rigid bus-bar of AIZ type.

AIZ®-registered trade mark of the group of companies AIZ

AIZ, RUSSIA +7-495-7412286
AIZ, BELARUS +375-222455264
AIZ, KAZAKHSTAN +7-717-296-5353
AIZ, LITHUANIA +370-62749925

www.bus-bar.ru
www.aiz.by
www.aiz.kz
www.bus-bar.eu

mail@bus-bar.ru
mail@aiz.by
mail@aiz.kz
mail@bus-bar.eu

AIZ

AIZ®-48-70...170

CONVENTIONAL MARKING

AIZ - trade mark of bus-bar
48 - horizontal crossing bus-bar transition fitting
70-170 - conditional diameter of of aluminium bus, mm

TR 3449-108-53937652-08 "Substation fitting for 6-500 kV"

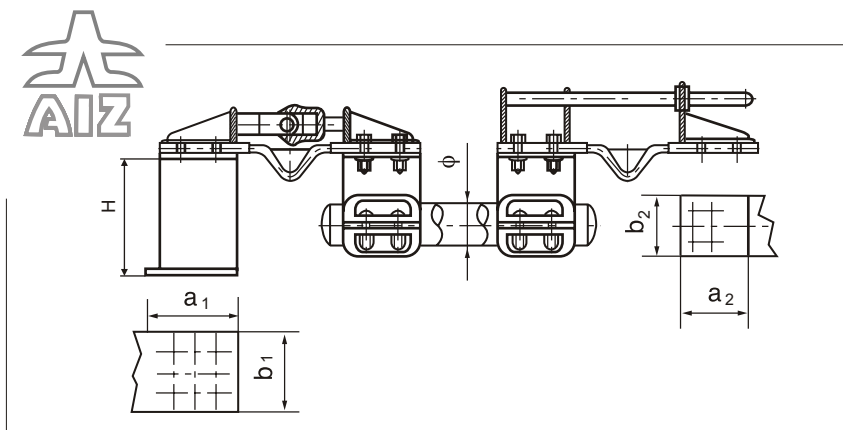
NOMENCLATURE

AIZ-48-70
AIZ-48-80
AIZ-48-90
AIZ-48-100
AIZ-48-110
AIZ-48-120
AIZ-48-130
AIZ-48-150
AIZ-48-170

APPLICATION AREA

Crossing clamp is designed to interconnect substation devices without conclusion on common main bus-bar. It helps to connect in close proximity to each other apparatuses, such as gas circuit breakers and current transformers. It is possible to connect apparatus on one level and with small variations in height of conclusions. Please, indicate difference of heights H from the ground in order.

Crossing bus-bar transition fitting AIZ-48-70 - AIZ-48-170



Brand of armature	Diameter of aluminium bus-bar, mm	Dimensions, mm			
		a1	b1	a2	b2
AIZ-48-70	70/64	85	80	85	80
AIZ-48-80	80/72	85	80	85	80
AIZ-48-90	90/80	105	100	105	100
AIZ-48-100	100/90	105	100	105	100
AIZ-48-110	110/100	105	100	105	100
AIZ-48-120	120/110	105	100	105	100
AIZ-48-130	130/116	130	125	130	125
AIZ-48-150	150/136	130	125	130	125
AIZ-48-170	170/156	130	125	130	125

Size H- specified with the order

AIZ®-49-70...170

CONVENTIONAL MARKING

AIZ - trade mark of bus-bar
49 - vertically-horizontal crossing bus-bar transition fitting
70-170 - conditional diameter of bus, mm

TR 3449-108-53937652-08 "Substation fitting for 6-500 kV"

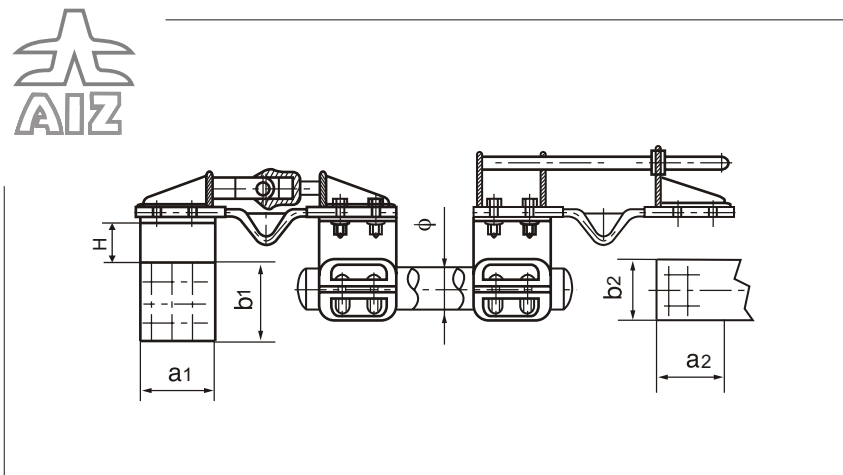
NOMENCLATURE

AIZ-49-70
AIZ-49-80
AIZ-49-90
AIZ-49-100
AIZ-49-110
AIZ-49-120
AIZ-49-130
AIZ-49-150
AIZ-49-170

APPLICATION AREA

Crossing clamp is designed to interconnect substation devices without conclusion on common main bus-bar. It helps to connect in close proximity to each other apparatuses, such as gas circuit breakers and current transformers. It is possible to connect apparatus on one level and with small variations in height of conclusions. Please, indicate difference of heights H from the ground in order.

Crossing bus-bar transition fitting AIZ -49-70- AIZ -49-170



Brand of armature	Diameter of aluminium bus-bar, mm	Dimensions, mm			
		a1	b1	a2	b2
AIZ-49-70	70/64	85	80	85	80
AIZ-49-80	80/72	85	80	85	80
AIZ-49-90	90/80	105	100	105	100
AIZ-49-100	100/90	105	100	105	100
AIZ-49-110	110/100	105	100	105	100
AIZ-49-120	120/110	105	100	105	100
AIZ-49-130	130/116	130	125	130	125
AIZ-49-150	150/136	130	125	130	125
AIZ-49-170	170/156	130	125	130	125

Crossing bus-bar transition fitting AIZ-50-70 - AIZ-50-170

AIZ®-50-70..170

CONVENTIONAL MARKING

AIZ - trade mark of bus-bar
50 - horizontal-inclined crossing bus-bar transition fitting
70-170 - conditional diameter of of aluminium bus, mm

TR 3449-108-53937652-08 "Substation fitting for 6-500 kV"

NOMENCLATURE

AIZ-50-70
AIZ-50-80
AIZ-50-90
AIZ-50-100
AIZ-50-110
AIZ-50-120
AIZ-50-130
AIZ-50-150
AIZ-50-170

APPLICATION AREA

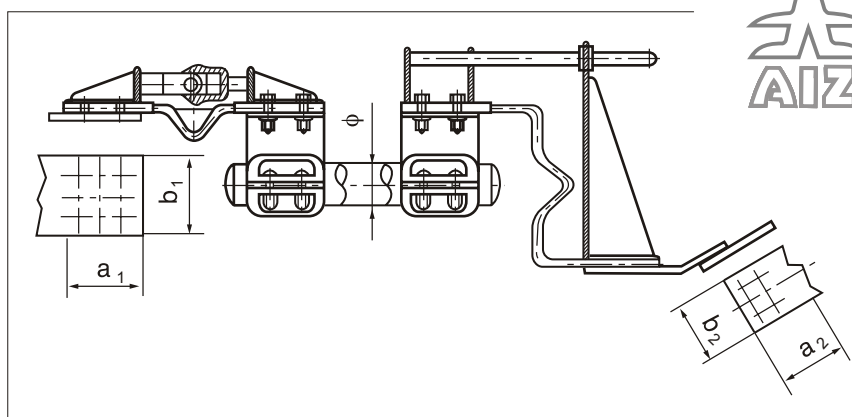
Crossing clamp is designed to interconnect substation devices without conclusion on common main bus-bar. It helps to connect in close proximity to each other apparatuses, such as gas circuit breakers and current transformers. It is possible to connect apparatus on one level and with small variations in height of conclusions. Please, indicate difference of heights H from the ground in order.

Mounting scheme

Please, indicate following data when place the order of AIZ-48, AIZ-49, AIZ-50 clamps:

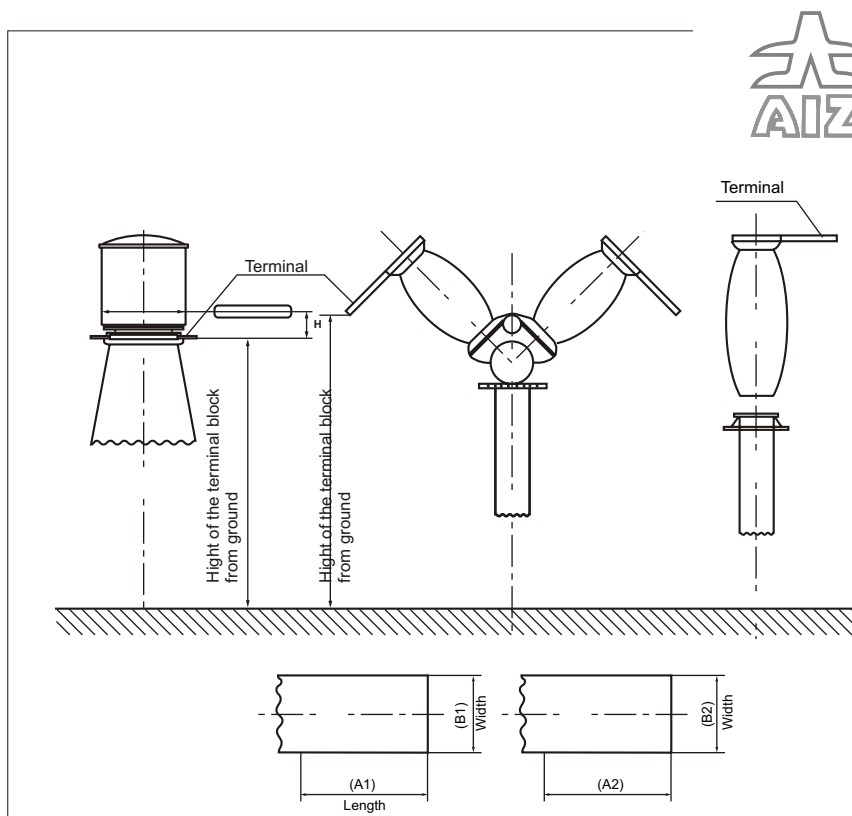
1. Place of setting of clamp.
2. Direction of conclusions (horizontal, inclined, vertical)
3. Specify the Dimensions of conclusions of apparatus, in accordance of their Dimensions a1, a2, b1, b2
4. Material of conclusions of apparatus (of aluminium or copper)
5. At connection of conclusions of apparatus, indicate difference of heights H from the ground
6. Length of of aluminium bus-bar used for the connection.
7. Amount of holes and distance between holes on the paws which are connected to the conclusions of apparatus (if it's necessary).

Completeness of delivery:
Crossing clamps are delivered in the form of sets of full factory readiness, including clamps, aluminum bus with necessary size, hardware, passport of product, instructions for installation. Tool for piercing holes in paw is not included.



Brand of armature	Diameter of aluminium bus-bar, mm	Dimensions, mm			
		a1	b1	a2	b2
AIZ-50-70	70/64	85	80	85	80
AIZ-50-80	80/72	85	80	85	80
AIZ-50-90	90/80	105	100	105	100
AIZ-50-100	100/90	105	100	105	100
AIZ-50-110	110/100	105	100	105	100
AIZ-50-120	120/110	105	100	105	100
AIZ-50-130	130/116	130	125	130	125
AIZ-50-150	150/136	130	125	130	125
AIZ-50-170	170/156	130	125	130	125

Mounting instruction of crossing bus-bar transition fittings



AIZ fittings which are introduced in this section are universal and are intended to connect or branch wires, also can be used irrespective of presence of rigid bus-bar during substation repair works and everywhere, where is necessary application of new modern types of connective substation reinforcement.

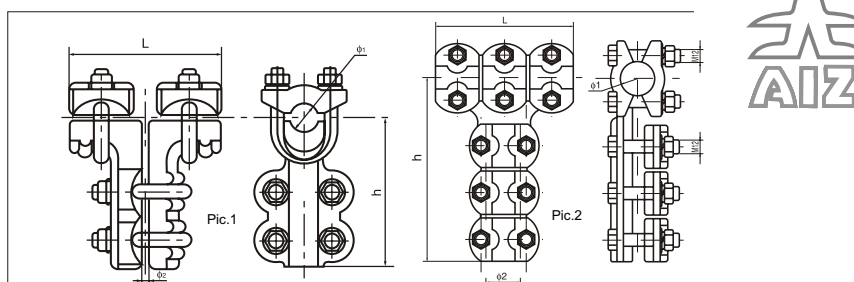
Most types of fitting have bolted connections. Such connections are justified in the conditions of substations. Installation is made easily and quickly and in most cases cutting of wire and pressing works are not required.

Thermal control of stations made under regulation, always able to identify slack contacts with any violations of work.

Lubricants are specially designed to reduce and stabilize the electrical resistance in metal bolt, contact connections of rigid bus-bar and its connections with power equipment. Lubrication allows reducing the electrical resistance to 100 times. Term of stabilization of resistance in the presence of lubricant EPOS -250 is more than 10 years.

We invite all design organisations to cooperate. We are ready operatively develop new type of rigid bus-bar fitting, also we are ready to share our experience, assist in design, collectively resolve all issues related to the introduction of this advanced technology.

T-connector AIZ-102-11... AIZ-102-88



Brand of armature	Diameter, mm		Dimensions, mm		Pic. №	Weight, kg
	Ø 1	Ø 2	L	h		
AIZ-102-11	7.5-9.6	7.5-9.6	118	102	1	0.7
AIZ-102-21	10.65-13.68	7.5-9.6	118	103	1	0.8
AIZ-102-22	10.65-13.68	10.65-13.68	120	103	1	0.8
AIZ-102-31	14.0-16.72	7.5-9.6	118	117	1	1.1
AIZ-102-32	14.0-16.72	10.65-13.68	120	117	1	1.1
AIZ-102-33	14.0-16.72	14.0-16.72	120	117	1	1.1
AIZ-102-41	17.5-22.4	7.5-9.6	120	117	1	1.1
AIZ-102-42	17.5-22.4	10.65-13.68	120	117	1	1.1
AIZ-102-43	17.5-22.4	14.0-16.72	120	117	1	1.1
AIZ-102-44	17.5-22.4	17.5-22.4	120	117	1	1.2
AIZ-102-52	23.0-29.2	10.65-13.68	146	168	2	1.5
AIZ-102-53	23.0-29.2	14.0-16.72	146	168	2	1.5
AIZ-102-54	23.0-29.2	17.5-22.4	146	190	2	1.5
AIZ-102-55	23.0-29.2	23.0-29.2	146	190	2	4.0
AIZ-102-64	30.0-35.0	17.5-22.4	146	200	2	4.5
AIZ-102-65	30.0-35.0	23.0-29.2	146	200	2	4.5
AIZ-102-66	30.0-35.0	30.0-35.0	146	200	2	4.8
AIZ-102-77	36.0-42.0	36.0-42.0	160	210	2	5.8
AIZ-102-74	30.0-35.0	17.5-22.4	160	210	2	5.9
AIZ-102-87	46.0-52.0	36.0-42.0	320	385	2	14.0
AIZ-102-88	46.0-52.0	46.0-52.0	320	395	2	14.8

AIZ®-102-11..88

CONVENTIONAL MARKING

AIZ - trade mark of bus-bar
102 - T-connector for one wire
11-88 - conditional diameter of wires, mm

TR 3449-108-53937652-08 "Substation fitting for 6-500 kV"

NOMENCLATURE

AIZ-102-11	AIZ-102-44	AIZ-102-74
AIZ-102-21	AIZ-102-52	AIZ-102-87
AIZ-102-22	AIZ-102-53	AIZ-102-88
AIZ-102-31	AIZ-102-54	
AIZ-102-32	AIZ-102-55	
AIZ-102-33	AIZ-102-64	
AIZ-102-41	AIZ-102-65	
AIZ-102-42	AIZ-102-66	
AIZ-102-43	AIZ-102-77	

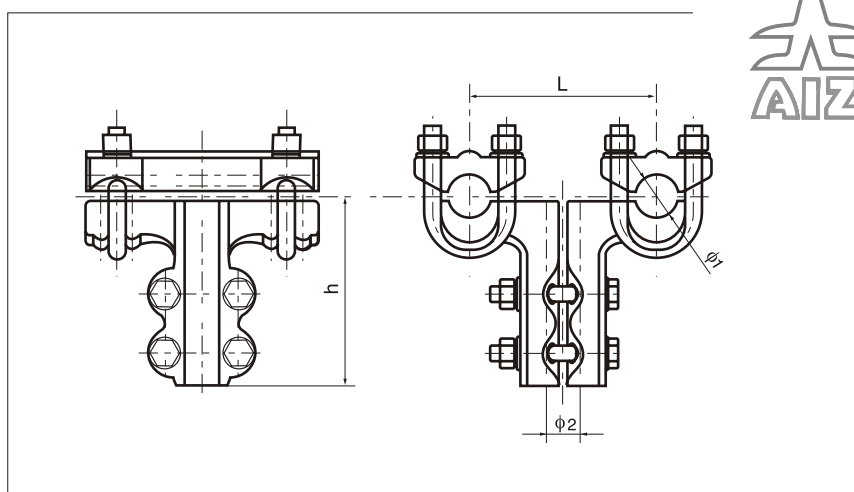
APPLICATION AREA

The clamp is applied to branching connection to bus-bar wire trunk without pressing and cutting the main conductor. Junction executes by bolts.

The ranges of diameters of wires are applied in notation:

1	7.50-9.60 mm
2	10.65-13.68 mm
3	14.0-16.72 mm
4	17.5-22.4 mm
5	23.0-29.2 mm
6	30.0-35.0 mm
7	36.0-42.0 mm
8	46.0-52.0 mm

T-connector AIZ-103-45...AIZ-103-66



Brand of armature	Dimensions, mm				Section of wires	Weight, kg
	Ø 1	Ø 2	L	h		
AIZ-103-44	22.0	22.0	120	125	185-240/185-240	3.2
AIZ-103-45	22.0	28.0	120	160	185-240/300-400	3.4
AIZ-103-53	28.0	18.0	120	160	300-400/120-150	3.6
AIZ-103-54	28.0	22.0	118	125	300-400/185-240	3.7
AIZ-103-55	28.0	28.0	120	186	300-400/300-400	3.9
AIZ-103-56	28.0	34.5	120	200	300-400/500-630	4.1
AIZ-103-65	34.5	28.0	120	186	500-630/300-400	4.5
AIZ-103-66	34.5	34.5	120	200	500-630/500-630	4.8

AIZ®-103-45..66

CONVENTIONAL MARKING

AIZ - trade mark of bus-bar
103 - T-connector for two wires
45-66- conditional diameter of aluminium wires, mm

TR 3449-108-53937652-08 "Substation fitting for 6-500 kV"

NOMENCLATURE

AIZ-103-45	The ranges of diameters of wires are applied in notation:
AIZ-103-53	
AIZ-103-54	
AIZ-103-55	
AIZ-103-56	
AIZ-103-65	
AIZ-103-66	

4	17.5-22.4 mm
5	23.0-29.2 mm
6	30.0-35.0 mm
7	36.0-42.0 mm
8	46.0-52.0 mm

APPLICATION AREA

The clamp is applied to branching connection to bus-bar wire trunk without pressing and cutting the main conductor. Junction executes by bolts.

AIZ®-104-4...7

CONVENTIONAL MARKING

AIZ - trade mark of bus-bar

104 - T- connector

4...7 - conditional diameter of aluminium wire, mm

TR 3449-108-53937652-08 "Substation fitting for 6-500 kV"

NOMENCLATURE

AIZ-104-4

AIZ-104-5

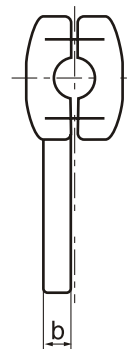
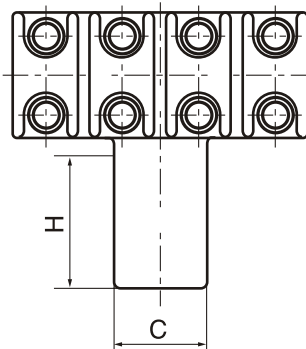
AIZ-104-6

AIZ-104-7

APPLICATION AREA

T- connector is designed to perform branching from main bus-bar which is executed by conductor without its pressing and cutting. For the connection with a wire of branching or with apparatus the connector has a flat pad. The necessary apertures can be pierced with special instrument, also the factory can perform this work and deliver it by clients special order.

T-connector AIZ-104-4... AIZ-104-7



Brand of armature	Section of wires, mm ²	Dimensions, mm			Weight. kg
		C	H	b	
AIZ-104-4	185-240	63	105	16	4,2
AIZ-104-5	300-400	80	105	20	6,1
AIZ-104-6	500-630	100	105	20	6,8
AIZ-104-7	630-800	110	110	22	7,5

AIZ®-107-185/120...630/400

CONVENTIONAL MARKING

AIZ - trade mark of bus-bar

107 - T- connector for two conductors

185-600 - conditional section of two main conductors, mm
120, 200, 400 - distance in mm between phases wires

TR 3449-108-53937652-08 "Substation fitting for 6-500 kV"

NOMENCLATURE

AIZ-107-185/120

AIZ-107-185/200

AIZ-107-185/400

AIZ-107-210/120

AIZ-107-210/200

AIZ-107-210/400

AIZ-107-240/120

AIZ-107-240/200

AIZ-107-240/400

AIZ-107-300/120

AIZ-107-300/200

AIZ-107-300/400

AIZ-107-400/120

AIZ-107-400/200

AIZ-107-400/400

AIZ-107-500/120

AIZ-107-500/200

AIZ-107-500/400

AIZ-107-630/120

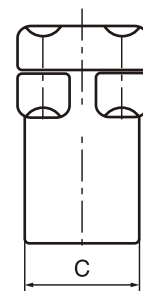
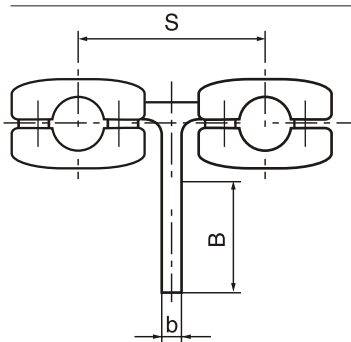
AIZ-107-630/200

AIZ-107-630/400

APPLICATION AREA

T- connector is designed to perform branching from main bus-bar which is executed by two conductors without theirs pressing and cutting. For the connection with a wire of branching or with apparatus the connector has a flat pad. The necessary apertures can be pierced with special instrument, also the factory can perform this work and deliver it by clients special order.

T-connector for twin bundle conductor and single tap conductor AIZ-107-185/120... AIZ-107-630/400



Brand of armature	Section of wires, mm ²	Dimensions, mm				Weight. kg
		B	C	b	S	
AIZ-107-185/120	185	80	50	12	120	1,25
AIZ-107-210/120	210	80	50	12	120	1,31
AIZ-107-240/120	240	80	50	14	120	1,50
AIZ-107-300/120	300	100	63	16	120	1,50
AIZ-107-400/120	400	100	63	16	120	1,60
AIZ-107-500/120	500	100	80	18	120	2,30
AIZ-107-630/120	630	100	100	18	120	2,70
AIZ-107-185/200	185	80	50	12	200	1,50
AIZ-107-210/200	210	80	50	12	200	1,50
AIZ-107-240/200	240	80	50	14	200	1,50
AIZ-107-300/200	300	100	63	16	200	1,60
AIZ-107-400/200	400	100	63	16	200	1,70
AIZ-107-500/200	500	100	80	18	200	2,30
AIZ-107-630/200	630	100	100	18	200	3,90
AIZ-107-240/400	240	80	50	14	400	6,50
AIZ-107-300/400	300	100	63	16	400	6,80
AIZ-107-500/400	500	100	80	18	400	6,90
AIZ-107-630/400	630	100	100	18	400	7,30

Cu-Alu Terminal connector
AIZ-109-35/6... AIZ-109-630/80

AIZ® -109-35/6..630/80

CONVENTIONAL MARKING

AIZ - trade mark of bus-bar
109 - Terminal connector
35/6 - conditional cross section of wire/core, mm2

TR 3449-108-53937652-08 "Substation fitting for 6-500 kV"

NOMENCLATURE

AIZ-109-35/6	AIZ-109-185/10	AIZ-109-300/25
AIZ-109-50/8	AIZ-109-185/25	AIZ-109-300/40
AIZ-109-70/10	AIZ-109-185/30	AIZ-109-400/20
AIZ-109-95/15	AIZ-109-210/10	AIZ-109-400/25
AIZ-109-120/7	AIZ-109-210/25	AIZ-109-400/35
AIZ-109-120/20	AIZ-109-240/30	AIZ-109-500/35
AIZ-109-120/25	AIZ-109-240/40	AIZ-109-500/65
AIZ-109-150/8	AIZ-109-300/15	AIZ-109-630/45
AIZ-109-150/20	AIZ-109-300/20	

APPLICATION AREA

The clamp was designed to perform junction to copper conclusions of apparatus or to conclusions plated by copper. The pad of clamp is completely performed by copper. The connection with aluminium part is monolithic. Pressing is completed by standard matrices. The necessary apertures can be pierced with special instrument, also the factory can perform this work and deliver it by clients special order.

Also factory can deliver an instrument and matrices.

AIZ® -110-35/6..630/80

CONVENTIONAL MARKING

AIZ - trade mark of bus-bar
110 -Terminal connector
35/6 - conditional cross section of aluminium wire/core, mm 2

TR 3449-108-53937652-08 "Substation fitting for 6-500 kV"

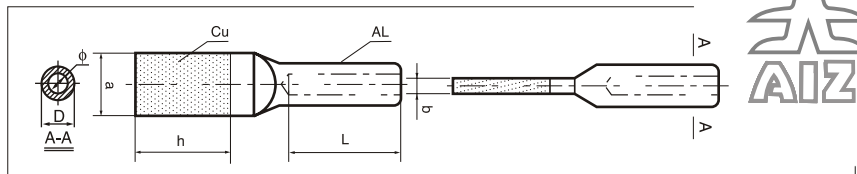
NOMENCLATURE

AIZ-110-35/6	AIZ-110-185/10	AIZ-110-300/25
AIZ-110-50/8	AIZ-110-185/25	AIZ-110-300/40
AIZ-110-70/10	AIZ-110-185/30	AIZ-110-400/20
AIZ-110-95/15	AIZ-110-210/10	AIZ-110-400/25
AIZ-110-120/7	AIZ-110-210/25	AIZ-110-400/35
AIZ-110-120/20	AIZ-110-240/30	AIZ-110-400/50
AIZ-110-120/25	AIZ-110-240/40	AIZ-110-500/35
AIZ-110-150/8	AIZ-110-300/15	AIZ-110-500/65
AIZ-110-150/20	AIZ-110-300/20	AIZ-110-630/45

APPLICATION AREA

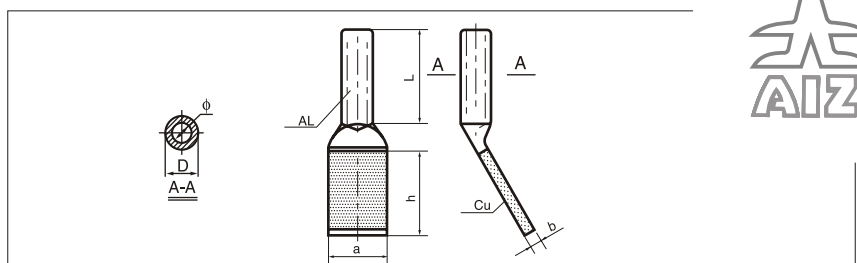
The clamp was designed to perform junction to copper conclusions of apparatus or to conclusions plated by copper. The pad of clamp is completely performed by copper. The connection with aluminium part is monolithic. Pressing is completed by standard matrices. The necessary apertures can be pierced with special instrument, also the factory can perform this work and deliver it by clients special order.

Also factory can deliver an instrument and matrices.



Brand of armature	Section of wire / core	Dimensions, mm						Weight, kg
		a	h	b	D	Ø	L	
AIZ-109-35/6	35/6	30	60	8	16	9.5	60	0.11
AIZ-109-50/8	50/8	30	60	8	18	11.0	60	0.11
AIZ-109-70/10	70/10	40	60	8	22	13.0	70	0.22
AIZ-109-95/15	95/15	40	60	8	26	15.0	80	0.22
AIZ-109-120/7	120/7	50	80	10	26	16.0	80	0.27
AIZ-109-120/20	120/20	50	80	10	26	16.5	80	0.27
AIZ-109-120/25	120/25	50	80	10	26	17.0	80	0.26
AIZ-109-150/8	150/8	50	80	10	30	17.5	90	0.32
AIZ-109-150/20	150/20	50	80	10	30	18.0	90	0.32
AIZ-109-150/25	150/25	50	80	10	30	18.5	90	0.31
AIZ-109-185/10	185/10	50	80	12	32	19.5	90	0.40
AIZ-109-185/25	185/25	50	80	12	32	20.5	90	0.39
AIZ-109-185/30	185/30	50	80	12	32	20.5	90	0.39
AIZ-109-210/10	210/10	50	80	12	34	20.5	100	0.50
AIZ-109-210/25	210/25	50	80	12	34	21.5	100	0.49
AIZ-109-240/30	240/30	50	80	12	36	23.0	100	0.59
AIZ-109-240/40	240/40	50	80	12	36	23.0	100	0.59
AIZ-109-300/15	300/15	63	100	16	40	24.5	110	0.73
AIZ-109-300/20	300/20	63	100	16	40	25.0	110	0.72
AIZ-109-300/25	300/25	63	100	16	40	25.5	110	0.72
AIZ-109-300/40	300/40	63	100	16	40	25.5	110	0.72
AIZ-109-400/20	400/20	63	100	12	45	28.5	120	0.83
AIZ-109-400/25	400/25	63	100	12	45	28.5	120	0.83
AIZ-109-400/35	400/35	63	100	12	45	28.5	120	0.83
AIZ-109-400/50	400/50	63	100	12	45	29.5	120	0.80
AIZ-109-500/35	500/35	80	80	16	52	31.5	120	1.08
AIZ-109-500/45	500/45	80	80	16	52	31.5	130	1.08
AIZ-109-500/65	500/65	80	80	16	52	32.0	130	1.07
AIZ-109-630/45	630/45	100	100	20	60	35.5	150	1.75
AIZ-109-630/55	630/55	100	100	20	60	36.0	150	1.71
AIZ-109-630/80	630/80	100	100	20	60	36.5	150	1.70

Cu-Alu Terminal connector
AIZ-110-35/6... AIZ-110-630/80



Brand of armature	Section of wire / core	Dimensions, mm						Weight, kg
		a	h	b	D	Ø	L	
AIZ-110-35/6	35/6	30	60	8	16	9.5	60	0.11
AIZ-110-50/8	50/8	30	60	8	18	11.0	60	0.11
AIZ-110-70/10	70/10	40	60	8	22	13.0	70	0.22
AIZ-110-95/15	95/15	40	60	8	26	15.0	80	0.22
AIZ-110-120/7	120/7	50	80	10	26	16.0	80	0.27
AIZ-110-120/20	120/20	50	80	10	26	16.5	80	0.27
AIZ-110-120/25	120/25	50	80	10	26	17.0	80	0.26
AIZ-110-150/8	150/8	50	80	10	30	17.5	90	0.32
AIZ-110-150/20	150/20	50	80	10	30	18.0	90	0.32
AIZ-110-150/25	150/25	50	80	10	30	18.5	90	0.31
AIZ-110-185/10	185/10	50	80	12	32	19.5	90	0.40
AIZ-110-185/25	185/25	50	80	12	32	20.5	90	0.39
AIZ-110-185/30	185/30	50	80	12	32	20.5	90	0.39
AIZ-110-210/10	210/10	50	80	12	34	20.5	100	0.50
AIZ-110-210/25	210/25	50	80	12	34	21.5	100	0.49
AIZ-110-240/30	240/30	50	80	12	36	23.0	100	0.59
AIZ-110-240/40	240/40	50	80	12	36	23.0	100	0.59
AIZ-110-300/15	300/15	63	100	16	40	24.5	110	0.73
AIZ-110-300/20	300/20	63	100	16	40	25.0	110	0.72
AIZ-110-300/25	300/25	63	100	16	40	25.5	110	0.72
AIZ-110-300/40	300/40	63	100	16	40	25.5	110	0.72
AIZ-110-400/20	400/20	63	100	12	45	28.5	120	0.83
AIZ-110-400/25	400/25	63	100	12	45	28.5	120	0.83
AIZ-110-400/35	400/35	63	100	12	45	28.5	120	0.83
AIZ-110-400/50	400/50	63	100	12	45	29.5	120	0.80
AIZ-110-500/35	500/35	80	80	16	52	31.5	120	1.08
AIZ-110-500/45	500/45	80	80	16	52	31.5	130	1.08
AIZ-110-500/65	500/65	80	80	16	52	32.0	130	1.07
AIZ-110-630/45	630/45	100	100	20	60	35.5	150	1.75
AIZ-110-630/55	630/55	100	100	20	60	36.0	150	1.71
AIZ-110-630/80	630/80	100	100	20	60	36.5	150	1.70

AIZ[®]-113-1...4

CONVENTIONAL MARKING

AIZ - trade mark of bus-bar
113 - Terminal connector
1...4 - conditional diameter of aluminium wire

TR 3449-108-53937652-08 "Substation fitting for 6-500 kV"

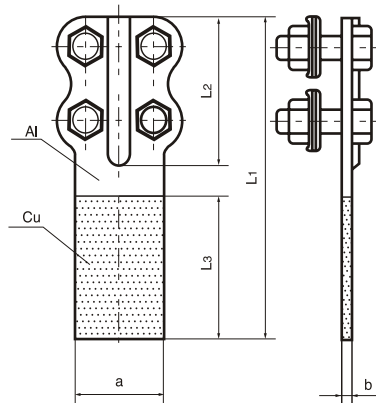
NOMENCLATURE

AIZAIZ-113-1
AIZC-113-2
AIZC-113-3
AIZC-113-4

APPLICATION AREA

The clamp was designed to perform junction to copper conclusions of apparatus or to conclusions plated by copper. The pad of clamp is completely performed by copper. The connection with aluminium part is monolithic. Pressing is completed by standard matrices. The necessary apertures can be pierced with special instrument, also the factory can perform this work and deliver it by clients special order. Also factory can deliver an instrument and matrices.

Cu-Alu Terminal connector AIZ-113-1... AIZ-113-4



Brand of armature	Section of wires, mm ²	Quantity bolts pcs	Dimensions, mm					Weight. kg
			a	b	L1	L2	L3	
AIZ-113-1	8.40-9.60	4	40	6.3	145	65	65	0.40
AIZ-113-2	11.0-13.68	4	40	6.3	175	80	80	0.50
AIZ-113-3	15.20-16.72	6	50	6.3	225	125	85	0.70
AIZ-113-4	19.02-21.28	6	50	6.3	225	125	85	0.75

AIZ[®]-114-1...4

CONVENTIONAL MARKING

AIZ - trade mark of bus-bar
114 - Terminal connector
1...4 - conditional diameter of aluminium wire

TR 3449-108-53937652-08 "Substation fitting for 6-500 kV"

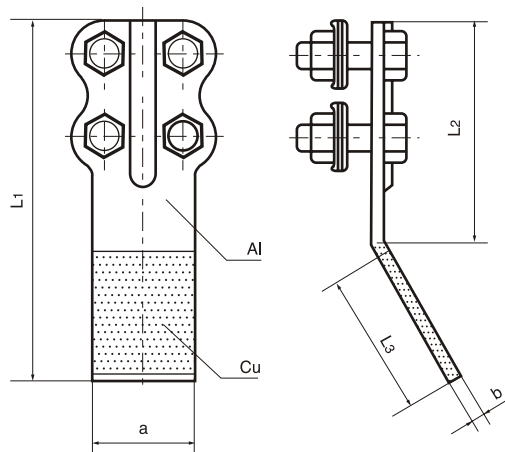
NOMENCLATURE

AIZ-114-1
AIZ-114-2
AIZ-114-3
AIZ-114-4

APPLICATION AREA

The clamp was designed to perform junction to copper conclusions of apparatus or to conclusions plated by copper. The pad of clamp is completely performed by copper. The connection with aluminium part is monolithic. Pressing is completed by standard matrices. The necessary apertures can be pierced with special instrument, also the factory can perform this work and deliver it by clients special order. Also factory can deliver an instrument and matrices.

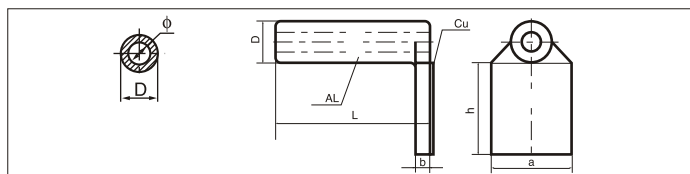
Cu-Alu Terminal connector AIZ-114-1... AIZ-114-4



Brand of armature	Section of wires, mm ²	Quantity bolts pcs	Dimensions, mm					Weight. kg
			a	b	L1	L2	L3	
AIZ-114-1	8.40-9.60	4	40	6.3	145	65	65	0.40
AIZ-114-2	11.0-13.68	4	40	6.3	175	80	80	0.50
AIZ-114-3	15.20-16.72	6	50	6.3	225	125	85	0.70
AIZ-114-4	19.02-21.28	6	50	6.3	225	125	85	0.75

Cu- Alu Terminal connector AIZ-112-35/6... AIZ-112-630/80

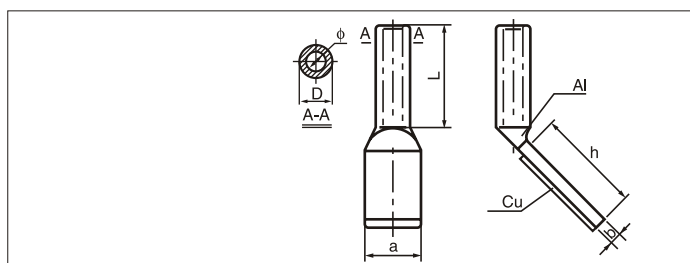
AIZ® -112-35/6..630/80



Brand of armature	Section of wire / core	Dimensions, mm						Weight, kg
		a	h	b	D	Ø	L	
AIZ-112-35/6	35/6	30	60	8	16	9.5	60	0.11
AIZ-112-50/8	50/8	30	60	8	18	11.0	60	0.11
AIZ-112-70/10	70/10	40	60	8	22	13.0	70	0.22
AIZ-112-95/15	95/15	40	60	8	26	15.0	80	0.22
AIZ-112-120/7	120/7	50	80	10	26	16.0	80	0.27
AIZ-112-120/20	120/20	50	80	10	26	16.5	80	0.27
AIZ-112-120/25	120/25	50	80	10	26	17.0	80	0.26
AIZ-112-150/8	150/8	50	80	10	30	17.5	90	0.32
AIZ-112-150/20	150/20	50	80	10	30	18.0	90	0.32
AIZ-112-150/25	150/25	50	80	10	30	18.5	90	0.31
AIZ-112-185/10	185/10	50	80	12	32	19.5	90	0.40
AIZ-112-185/25	185/25	50	80	12	32	20.5	90	0.39
AIZ-112-185/30	185/30	50	80	12	32	20.5	90	0.39
AIZ-112-210/10	210/10	50	80	12	34	20.5	100	0.50
AIZ-112-210/25	210/25	50	80	12	34	21.5	100	0.49
AIZ-112-240/30	240/30	50	80	12	36	23.0	100	0.59
AIZ-112-240/40	240/40	50	80	12	36	23.0	100	0.59
AIZ-112-300/15	300/15	63	100	16	40	24.5	110	0.73
AIZ-112-300/20	300/20	63	100	16	40	25.0	110	0.72
AIZ-112-300/25	300/25	63	100	16	40	25.5	110	0.72
AIZ-112-300/40	300/40	63	100	16	40	25.5	110	0.72
AIZ-112-400/20	400/20	63	100	12	45	28.5	120	0.83
AIZ-112-400/25	400/25	63	100	12	45	28.5	120	0.83
AIZ-112-400/35	400/35	63	100	12	45	28.5	120	0.83
AIZ-112-400/50	400/50	63	100	12	45	29.5	120	0.80
AIZ-112-500/35	500/35	80	80	16	52	31.5	120	1.08
AIZ-112-500/45	500/45	80	80	16	52	31.5	130	1.08
AIZ-112-500/65	500/65	80	80	16	52	32.0	130	1.07
AIZ-112-630/45	630/45	100	100	20	60	35.5	150	1.75
AIZ-112-630/55	630/55	100	100	20	60	36.0	150	1.71
AIZ-112-630/80	630/80	100	100	20	60	36.5	150	1.70

Cu- Alu Terminal connector AIZ-111-35/6... AIZ-111-630/80

AIZ® -111-35/6..630/80



Brand of armature	Section of wire / core	Dimensions, mm						Weight, kg
		a	h	b	D	Ø	L	
AIZ-111-35/6	35/6	30	60	8	16	9.5	60	0.11
AIZ-111-50/8	50/8	30	60	8	18	11.0	60	0.11
AIZ-111-70/10	70/10	40	60	8	22	13.0	70	0.22
AIZ-111-95/15	95/15	40	60	8	26	15.0	80	0.22
AIZ-111-120/7	120/7	50	80	10	26	16.0	80	0.27
AIZ-111-120/20	120/20	50	80	10	26	16.5	80	0.27
AIZ-111-120/25	120/25	50	80	10	26	17.0	80	0.26
AIZ-111-150/8	150/8	50	80	10	30	17.5	90	0.32
AIZ-111-150/20	150/20	50	80	10	30	18.0	90	0.32
AIZ-111-150/25	150/25	50	80	10	30	18.5	90	0.31
AIZ-111-185/10	185/10	50	80	12	32	19.5	90	0.40
AIZ-111-185/25	185/25	50	80	12	32	20.5	90	0.39
AIZ-111-185/30	185/30	50	80	12	32	20.5	90	0.39
AIZ-111-210/10	210/10	50	80	12	34	20.5	100	0.50
AIZ-111-210/25	210/25	50	80	12	34	21.5	100	0.49
AIZ-111-240/30	240/30	50	80	12	36	23.0	100	0.59
AIZ-111-240/40	240/40	50	80	12	36	23.0	100	0.59
AIZ-111-300/15	300/15	63	100	16	40	24.5	110	0.73
AIZ-111-300/20	300/20	63	100	16	40	25.0	110	0.72
AIZ-111-300/25	300/25	63	100	16	40	25.5	110	0.72
AIZ-111-300/40	300/40	63	100	16	40	25.5	110	0.72
AIZ-111-400/20	400/20	63	100	12	45	28.5	120	0.83
AIZ-111-400/25	400/25	63	100	12	45	28.5	120	0.83
AIZ-111-400/35	400/35	63	100	12	45	28.5	120	0.83
AIZ-111-400/50	400/50	63	100	12	45	29.5	120	0.80
AIZ-111-500/35	500/35	80	80	16	52	31.5	120	1.08
AIZ-111-500/45	500/45	80	80	16	52	31.5	130	1.08
AIZ-111-500/65	500/65	80	80	16	52	32.0	130	1.07
AIZ-111-630/45	630/45	100	100	20	60	35.5	150	1.75
AIZ-111-630/55	630/55	100	100	20	60	36.0	150	1.71
AIZ-111-630/80	630/80	100	100	20	60	36.5	150	1.70

AIZ®-registered trade mark of the group of companies AIZ
AIZ, RUSSIA +7-495-7412286
AIZ, BELARUS +375-222455264
AIZ, KAZAKHSTAN +7-717-296-5353
AIZ, LITHUANIA +370-62749925

www.bus-bar.ru
www.aiz.by
www.aiz.kz
www.bus-bar.eu

mail@bus-bar.ru
mail@aiz.by
mail@aiz.kz
mail@bus-bar.eu



AIZ® -117-1...4

CONVENTIONAL MARKING

AIZ- trade mark of armature
117- Terminal bolt clamp
1...4 conditional diameter of aluminium wire

TR 3449-108-53937652-08 "Substation fitting for 6-500 kV"

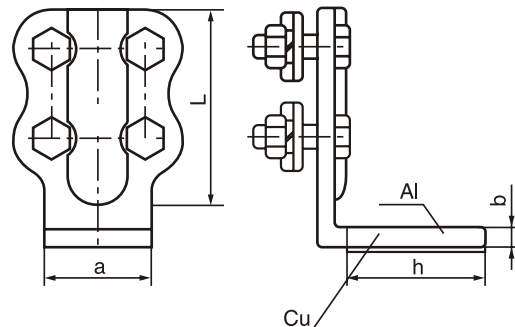
NOMENCLATURE

AIZ-117-1
AIZ-117-2
AIZ-117-3
AIZ-117-4

APPLICATION AREA

The clamp was designed to perform junction to copper conclusions of apparatus or to conclusions plated by copper. The pad of clamp is bimetal performed from copper and aluminium. The connection of copper part to aluminium part is monolithic. The wire connection is performed by bolts. The necessary apertures can be pierced with special instrument, also the factory can perform this work and deliver it by clients special order. Also factory can deliver an instrument and matrices.

Cu-Alu terminal bolt clamp AIZ-117-1... AIZ-117-4



Brand of armature	Section of wires, mm ²	Quantity bolts pcs	Dimensions, mm				Weight, kg
			a	h	b	L	
AIZ-117-1	35-50	4	40	65	6	65	0.38
AIZ-117-2	70-95	4	40	80	6	80	0.43
AIZ-117-3	120-150	6	50	85	8	125	0.69
AIZ-117-4	185-240	6	50	85	8	125	0.78

AIZ® -120-3...6

CONVENTIONAL MARKING

AIZ- trade mark of armature
120- Terminal bolt clamp
1 conditional cross section of wire

TR 3449-108-53937652-08 "Substation fitting for 6-500 kV"

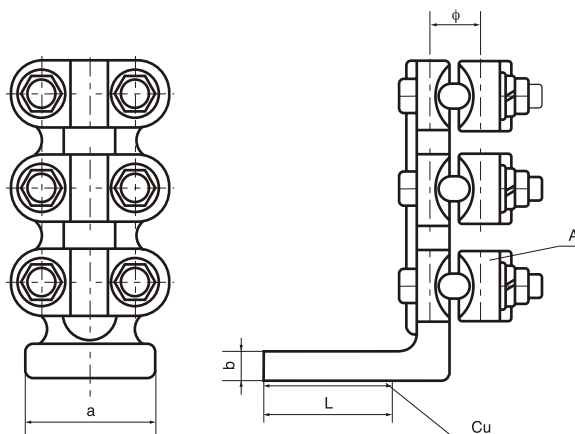
NOMENCLATURE

AIZ-120-3
AIZ-120-4
AIZ-120-5
AIZ-120-6

APPLICATION AREA

The clamp was designed to perform junction to copper conclusions of apparatus or to conclusions plated by copper. The pad of clamp is bimetal performed from copper and aluminium. The connection of copper part to aluminium part is monolithic. The wire connection is performed by bolts. The necessary apertures can be pierced with special instrument, also the factory can perform this work and deliver it by clients special order. Also factory can deliver an instrument and matrices.

Cu-Alu terminal bolt clamp AIZ-120-3... AIZ-120-6



Brand of armature	Section of wires, mm ²	Diameter, mm	Dimensions, mm				Weight, kg
			a	L	b	φ	
AIZ-120-3	120-150	14.5-17.5	80	85	10	17	1.9
AIZ-120-4	185-240	18.9-21.4	80	85	10	22	2.1
AIZ-120-5	300-400	23.0-28.0	80	85	14	28	2.2
AIZ-120-6	500-630	30.0-34.5	100	105	16	35	2.5

Cu-Alu terminal bolt clamp AIZ-115-1... AIZ-115-4

AIZ® -115-1..4

CONVENTIONAL MARKING

AIZ- trade mark of armature
115- Terminal bolt clamp
1...4 conditional cross section of wire/core

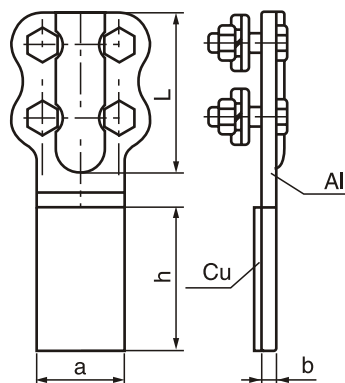
TR 3449-108-53937652-08 "Substation fitting for 6-500 kV"

NOMENCLATURE

AIZ-115-1
AIZ-115-2
AIZ-115-3
AIZ-115-4

APPLICATION AREA

The clamp was designed to perform junction to copper conclusions of apparatus or to conclusions plated by copper. The pad of clamp is bimetal performed from copper and aluminium. The connection of copper part to aluminium part is monolithic. The wire connection is performed by bolts. The necessary apertures can be pierced with special instrument, also the factory can perform this work and deliver it by clients special order. Also factory can deliver an instrument and matrices.



Brand of armature	Section of wires, mm ²	Quantity bolts pcs	Dimensions, mm				Weight. kg
			a	h	b	L	
AIZ-115-1	35-50	4	40	65	6	65	0.38
AIZ-115-2	70-95	4	40	80	6	80	0.43
AIZ-115-3	120-150	6	50	85	8	125	0.69
AIZ-115-4	185-240	6	50	85	8	125	0.78

Cu-Alu terminal bolt clamp AIZ-116-1... AIZ-116-4

AIZ® -116-1..4

CONVENTIONAL MARKING

AIZ- trade mark of armature
116- Terminal bolt clamp
1...4 conditional cross section of wire

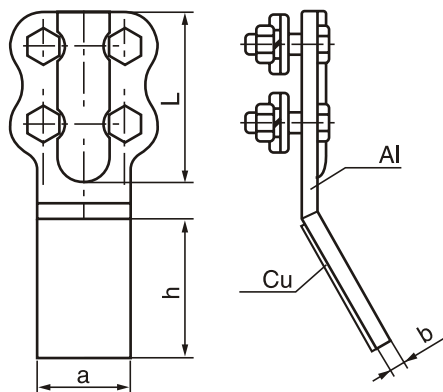
TR 3449-108-53937652-08 "Substation fitting for 6-500 kV"

NOMENCLATURE

AIZ-116-1
AIZ-116-2
AIZ-116-3
AIZ-116-4

APPLICATION AREA

The clamp was designed to perform junction to copper conclusions of apparatus or to conclusions plated by copper. The pad of clamp is bimetal performed from copper and aluminium. The connection of copper part to aluminium part is monolithic. The wire connection is performed by bolts. The necessary apertures can be pierced with special instrument, also the factory can perform this work and deliver it by clients special order. Also factory can deliver an instrument and matrices.



Brand of armature	Section of wires, mm ²	Quantity bolts pcs	Dimensions, mm				Weight. kg
			a	h	b	L	
AIZ-116-1	35-50	4	40	65	6	65	0.38
AIZ-116-2	70-95	4	40	80	6	80	0.43
AIZ-116-3	120-150	6	50	85	8	125	0.69
AIZ-116-4	185-240	6	50	85	8	125	0.78

AIZ®-registered trade mark of the group of companies AIZ

AIZ, RUSSIA +7-495-7412286
AIZ, BELARUS +375-222455264
AIZ, KAZAKHSTAN +7-717-296-5353
AIZ, LITHUANIA +370-62749925

www.bus-bar.ru
www.aiz.by
www.aiz.kz
www.bus-bar.eu

mail@bus-bar.ru
mail@aiz.by
mail@aiz.kz
mail@bus-bar.eu



AIZ®-118-3...6

CONVENTIONAL MARKING

AIZ- trade mark of armature
118- Terminal bolt clamp
3...6 conditional diameter of wire

TR 3449-108-53937652-08 "Substation fitting for 6-500 kV"

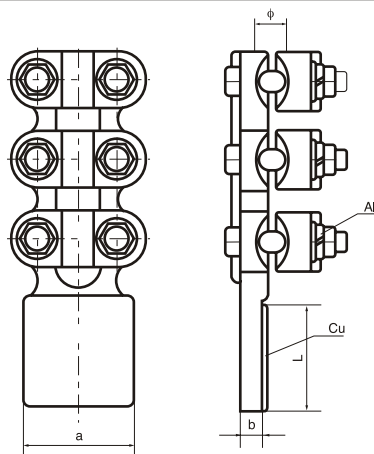
NOMENCLATURE

AIZ-118-3
AIZ-118-4
AIZ-118-5
AIZ-118-6

APPLICATION AREA

The clamp was designed to perform junction to copper conclusions of apparatus or to conclusions plated by copper. The pad of clamp is bimetal performed from copper and aluminium. The connection of copper part to aluminium part is monolithic. The wire connection is performed by bolts. The necessary apertures can be pierced with special instrument, also the factory can perform this work and deliver it by clients special order. Also factory can deliver an instrument and matrices.

Cu-Alu terminal bolt clamp AIZ-118-1... AIZ-118-4



Brand of armature	Section of wires, mm ²	Diameter, mm	Dimensions, mm				Weight, kg
			a	L	b	Ø	
AIZ-118-3	120-150	14.5-17.5	80	85	10	17	1.9
AIZ-118-4	185-240	18.9-21.4	80	85	10	22	2.1
AIZ-118-5	300-400	23.0-28.0	80	85	14	28	2.2
AIZ-118-6	500-630	30.0-34.5	100	105	16	35	2.5

AIZ®-119-3...6

CONVENTIONAL MARKING

AIZ- trade mark of armature
119- Terminal bolt clamp
3...6 conditional cross section of wire

TR 3449-108-53937652-08 "Substation fitting for 6-500 kV"

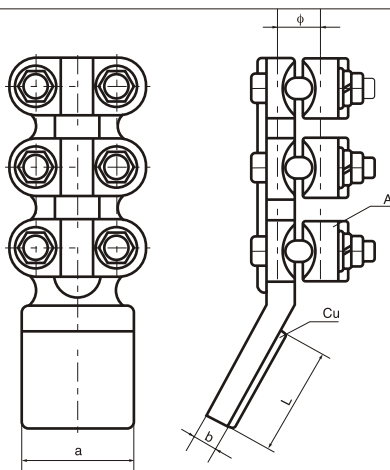
NOMENCLATURE

AIZ-119-3
AIZ-119-4
AIZ-119-5
AIZ-119-6

APPLICATION AREA

The clamp was designed to perform junction to copper conclusions of apparatus or to conclusions plated by copper. The pad of clamp is performed from copper. The connection of copper part to aluminium part is monolithic. The wire connection is performed by bolts. The necessary apertures can be pierced with special instrument, also the factory can perform this work and deliver it by clients special order. Also factory can deliver an instrument and matrices.

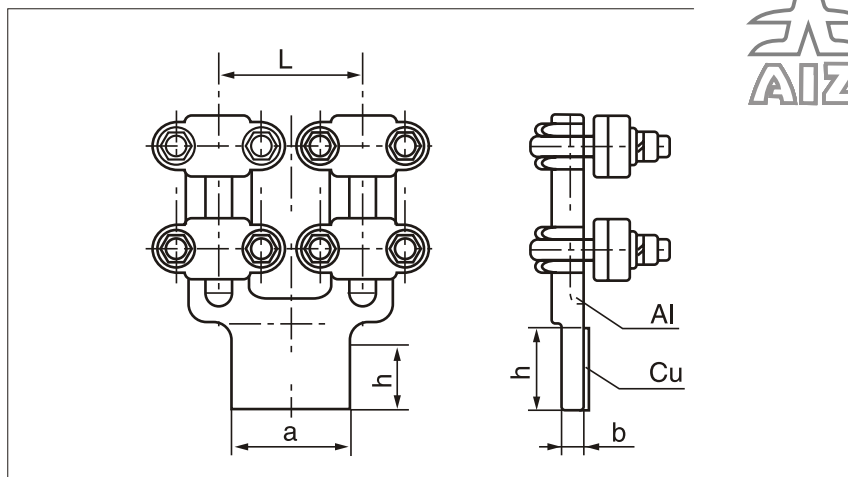
Cu-Alu terminal bolt clamp AIZ-119-3... AIZ-119-6



Brand of armature	Section of wires, mm ²	Diameter, mm	Dimensions, mm				Weight, kg
			a	L	b	Ø	
AIZ-119-3	120-150	14.5-17.5	80	85	10	17	1.9
AIZ-119-4	185-240	18.9-21.4	80	85	10	22	2.1
AIZ-119-5	300-400	23.0-28.0	80	85	14	28	2.2
AIZ-119-6	500-630	30.0-34.5	100	105	16	35	2.5

Cu-Alu terminal bolt clamp AIZ-128-4-120... AIZ-128-7-200

AIZ[®] -128-4-120..7-200



CONVENTIONAL MARKING

AIZ- trade mark of armature
128- Terminal bolt clamp for two wires
4...7 conditional cross section of wire
120 or 200- Inter phase distance

TR 3449-108-53937652-08 "Substation fitting for 6-500 kV"

NOMENCLATURE

AIZ-128-4-120
AIZ-128-5-120
AIZ-128-6-120
AIZ-128-4-200
AIZ-128-5-200
AIZ-128-6-200
AIZ-128-7-200

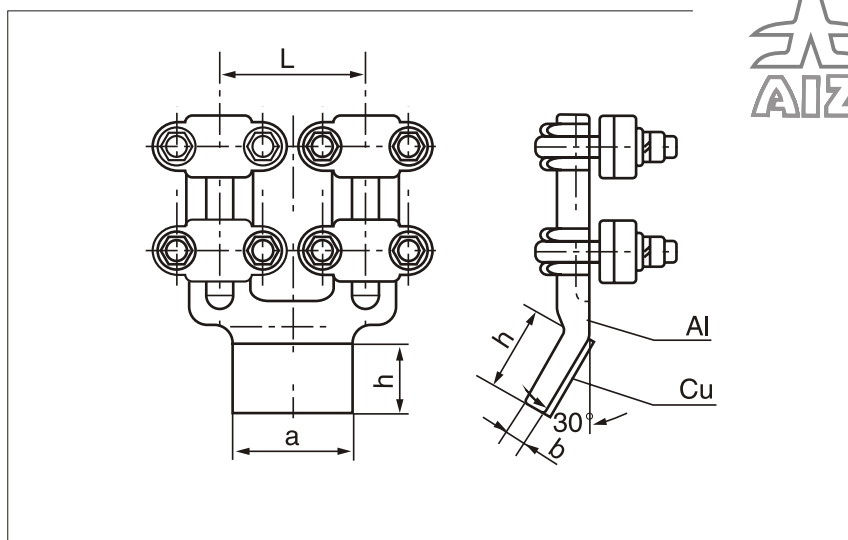
APPLICATION AREA

The clamp was designed to perform junction to copper conclusions of apparatus or to conclusions plated by copper. The pad of clamp is bimetal performed from copper and aluminium. The connection of copper part to aluminium part is monolithic. The wire connection is performed by bolts. The necessary apertures can be pierced with special instrument, also the factory can perform this work and deliver it by clients special order. Also factory can deliver an instrument and matrices.

Brand of armature	Section of wires, mm ²	Quantity bolts pcs	Dimensions, mm				Weight, kg
			a	h	b	L	
AIZ-128-4-120	185-240	4	80	80	14	120	4,7
AIZ-128-5-120	300-400	4	100	100	16	120	5,7
AIZ-128-6-120	500-630	6	125	125	20	120	6,5
AIZ-128-4-200	185-240	4	80	80	14	200	4,9
AIZ-128-5-200	300-400	6	100	100	16	200	5,4
AIZ-128-6-200	500-630	6	125	125	20	200	6,8
AIZ-128-7-200	700-800	6	125	125	22	200	7,7

Cu-Alu terminal bolt clamp AIZ-129-4-120... AIZ-129-7-200

AIZ[®] -129-4-120...7-200



CONVENTIONAL MARKING

AIZ- trade mark of armature
129- Terminal bolt clamp for two wires
4...7 conditional cross section of wire

TR 3449-108-53937652-08 "Substation fitting for 6-500 kV"

NOMENCLATURE

AIZ-129-4-120
AIZ-129-5-120
AIZ-129-6-120
AIZ-129-4-200
AIZ-129-5-200
AIZ-129-6-200
AIZ-129-7-200

APPLICATION AREA

The clamp was designed to perform junction to copper conclusions of apparatus or to conclusions plated by copper. The pad of clamp is bimetal performed from copper and aluminium. The connection of copper part to aluminium part is monolithic. The wire connection is performed by bolts. The necessary apertures can be pierced with special instrument, also the factory can perform this work and deliver it by clients special order. Also factory can deliver an instrument and matrices.

Brand of armature	Section of wires, mm ²	Quantity bolts pcs	Dimensions, mm				Weight, kg
			a	h	b	L	
AIZ-129-4-120	185-240	4	80	80	14	120	4,7
AIZ-129-5-120	300-400	4	100	100	16	120	5,7
AIZ-129-6-120	500-630	6	125	125	20	120	6,5
AIZ-129-4-200	185-240	4	80	80	14	200	4,9
AIZ-129-5-200	300-400	6	100	100	16	200	5,4
AIZ-129-6-200	500-630	6	125	125	20	200	6,8
AIZ-129-7-200	700-800	6	125	125	22	200	7,7

AIZ[®] registered trade mark of the group of companies AIZ

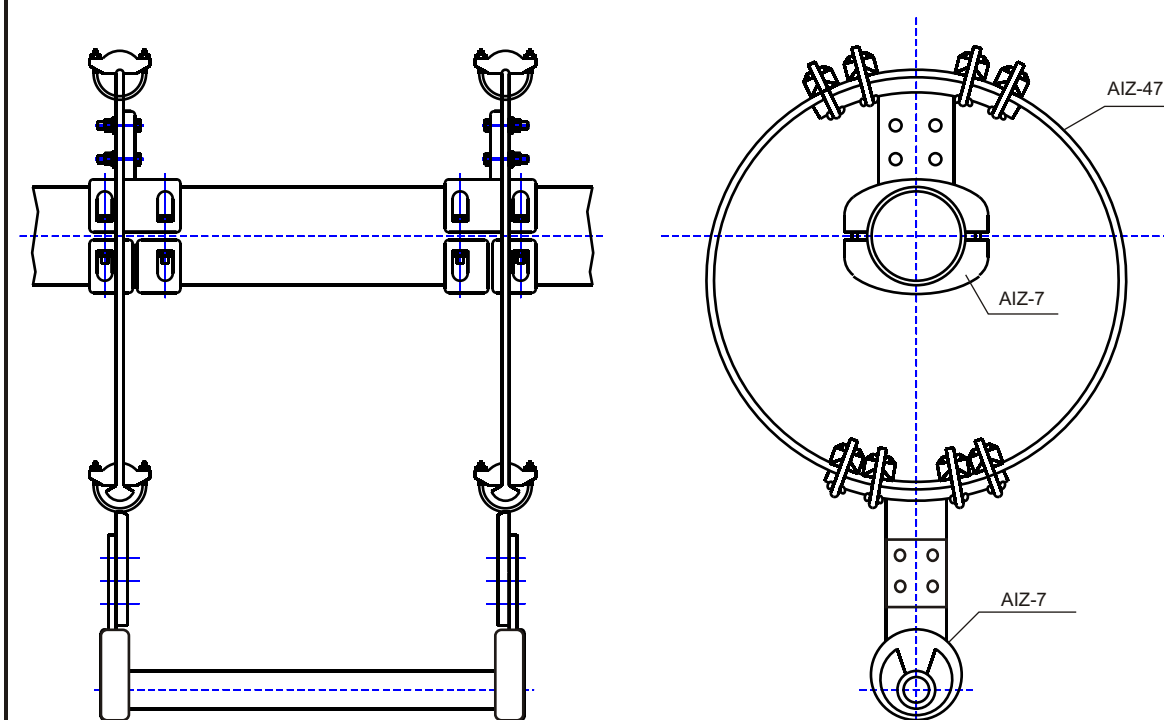
AIZ, RUSSIA +7-495-7412286
AIZ, BELARUS +375-222455264
AIZ, KAZAKHSTAN +7-717-296-5353
AIZ, LITHUANIA +370-62749925

www.bus-bar.ru
www.aiz.by
www.aiz.kz
www.bus-bar.eu

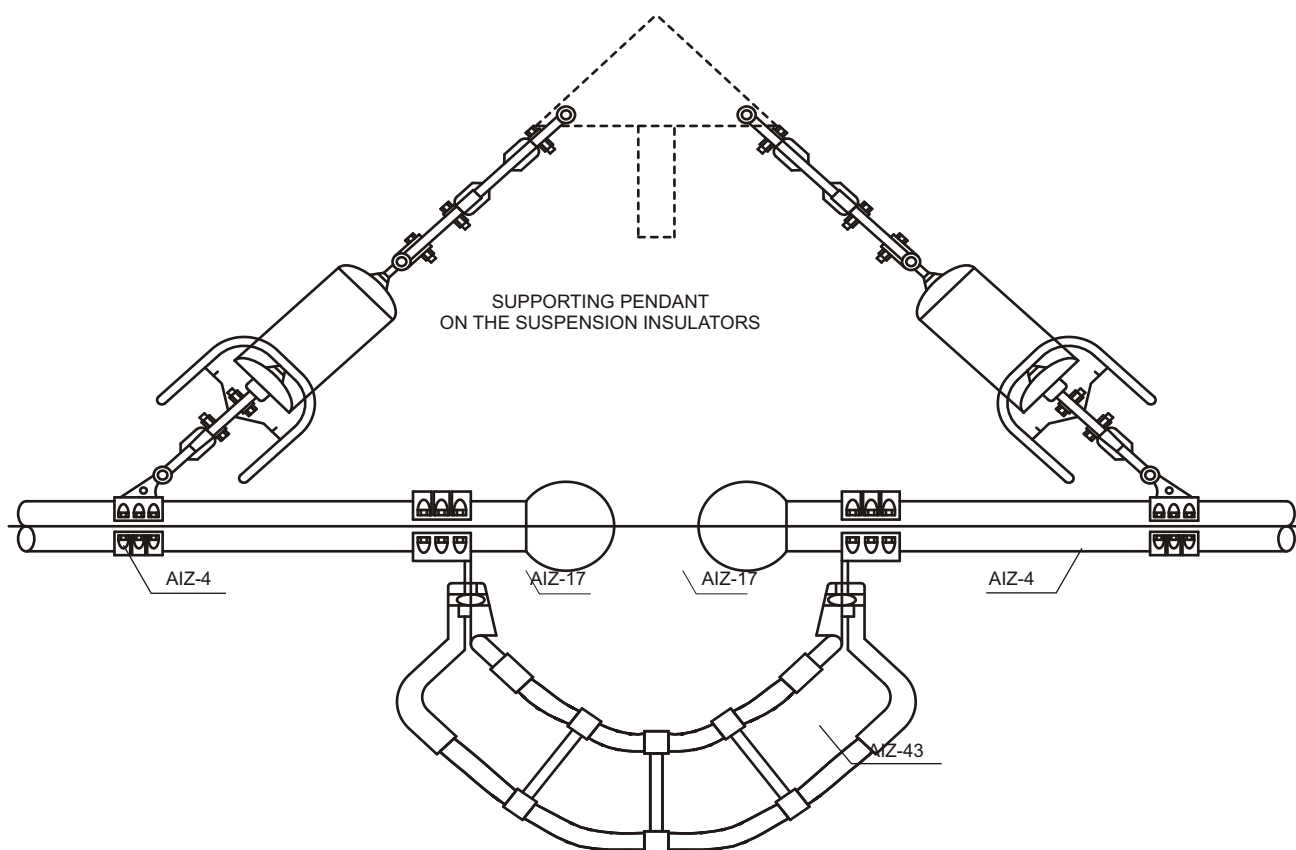
mail@bus-bar.ru
mail@aiz.by
mail@aiz.kz
mail@bus-bar.eu



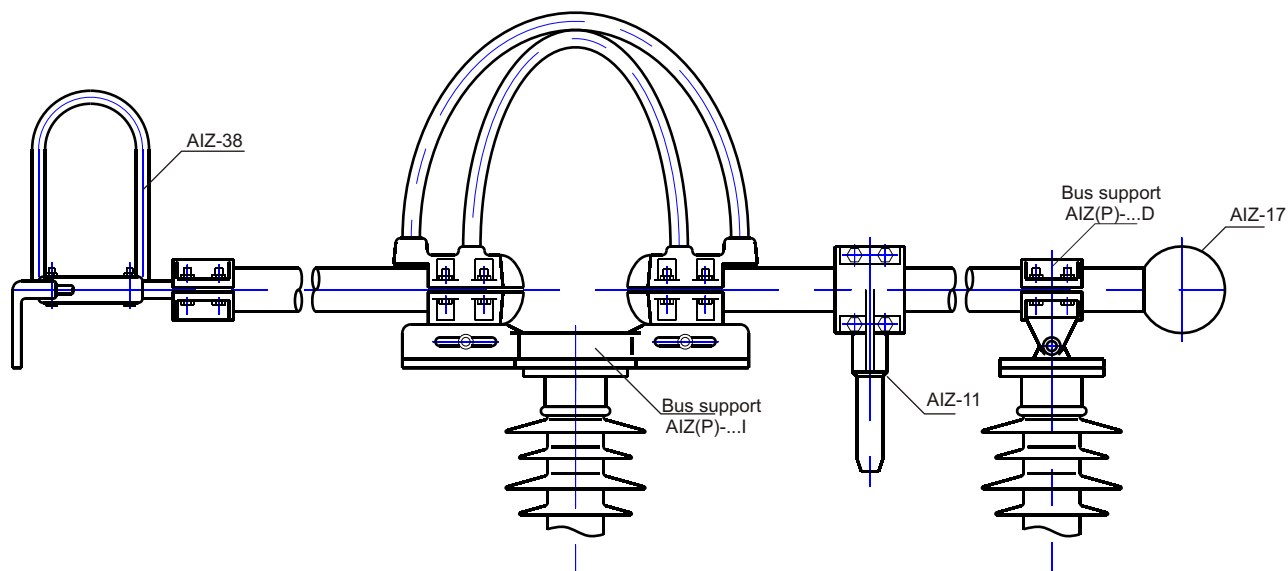
DAMPING CONNECTION THROUGH VIBRATION EXTINGUISHING RING



SUPPORTING PENDANT
ON THE SUSPENSION INSULATORS



Flexible junction of rigid bus-bar, which is performed to conclusions of apparatus on the bus-bar supports



Connection through flat flexible junction

